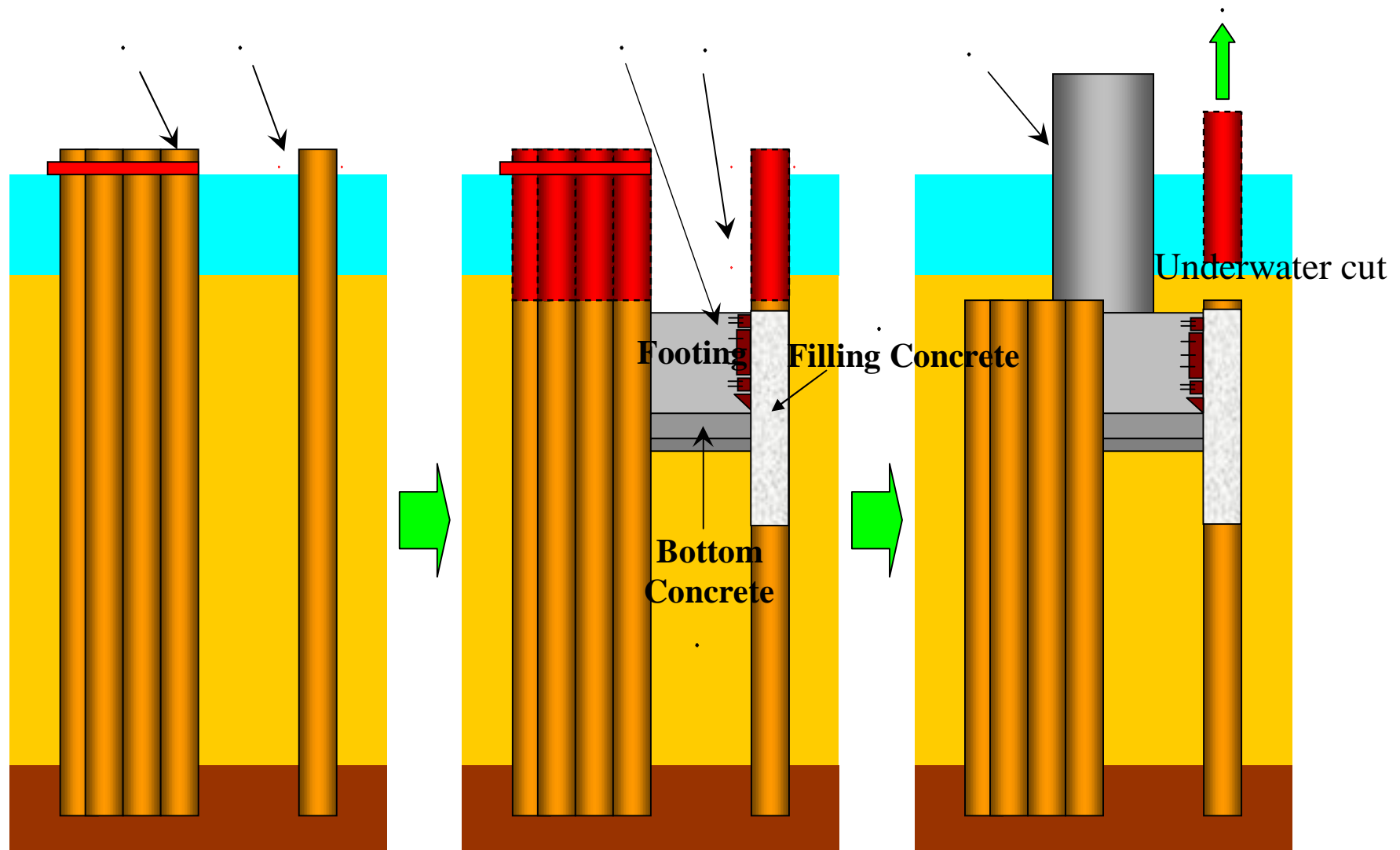
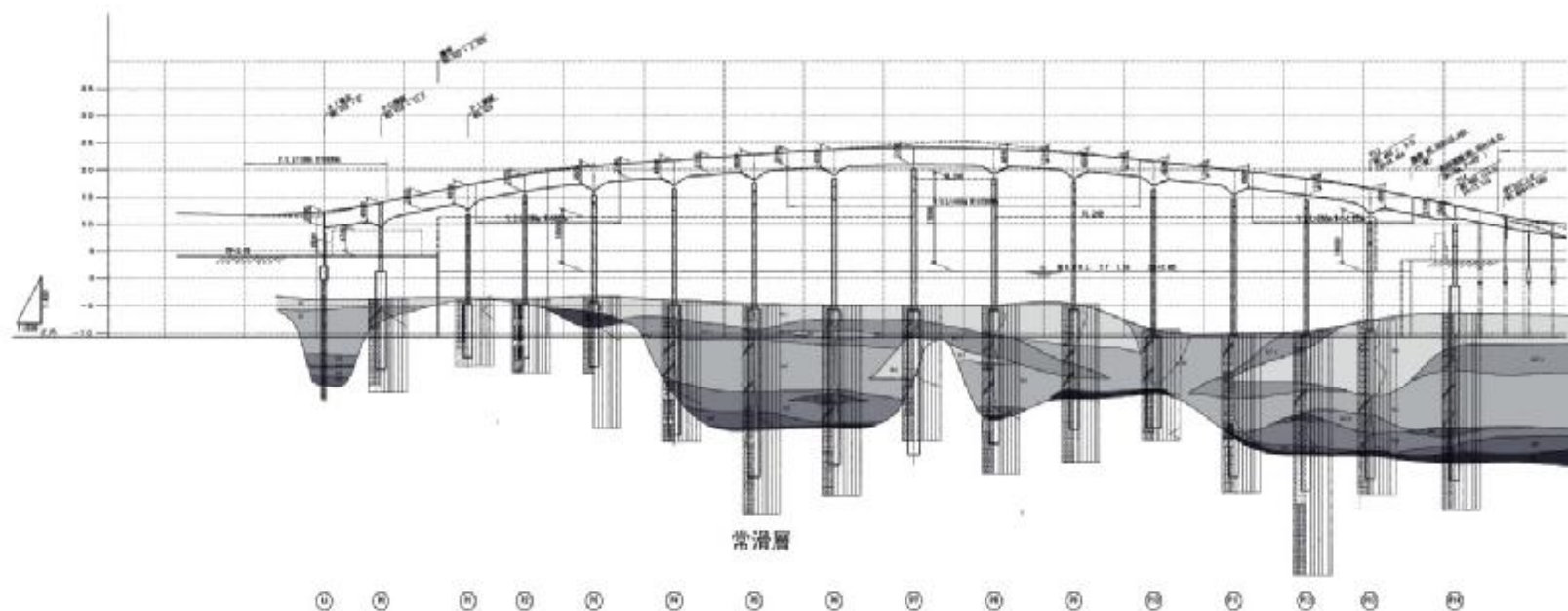


Construction Procedure





Construction Procedure of Steel Pipe Well Foundations

‡@

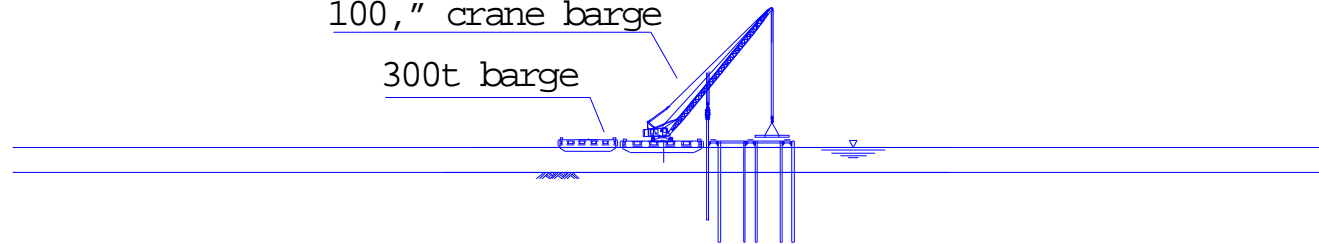
Installation of guide materials

Guide pile driven by vibro-hammer

Installation of guide frame

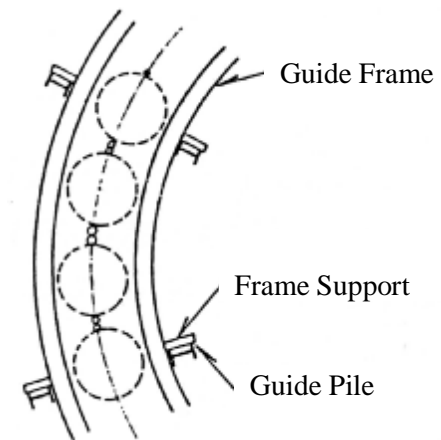
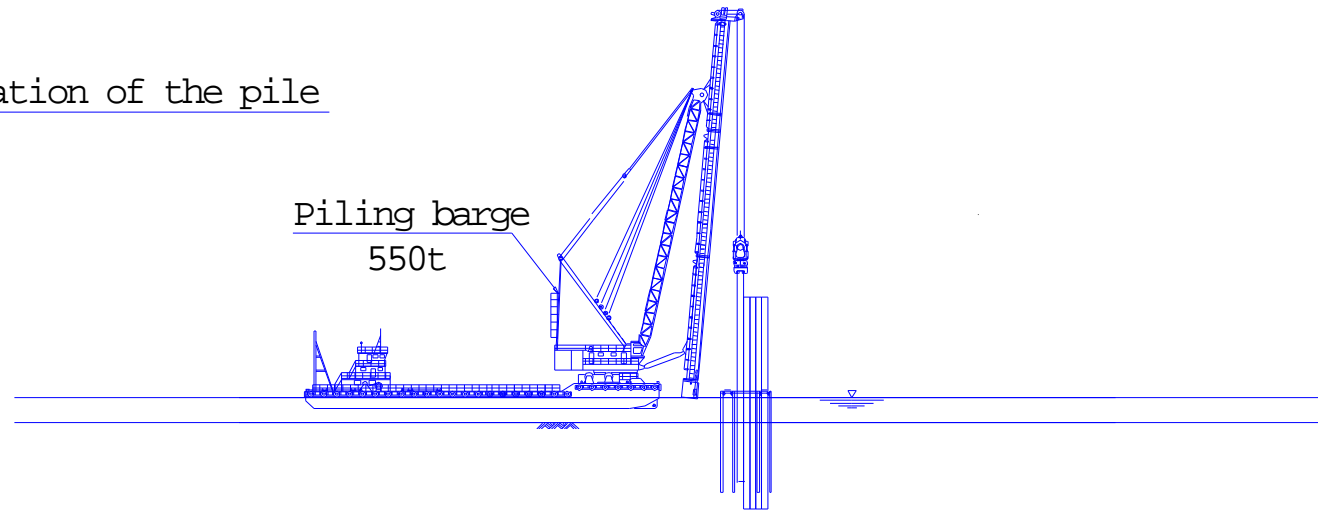
100," crane barge

300t barge



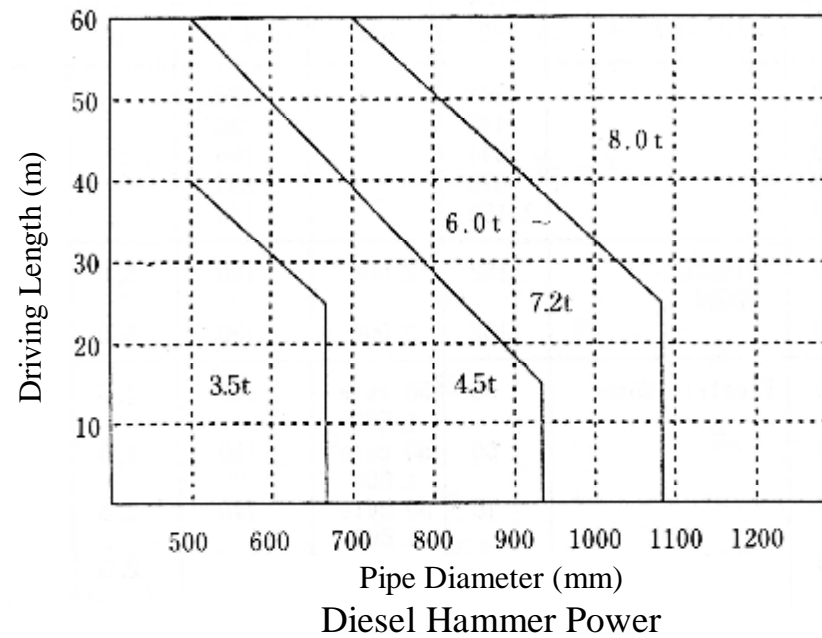
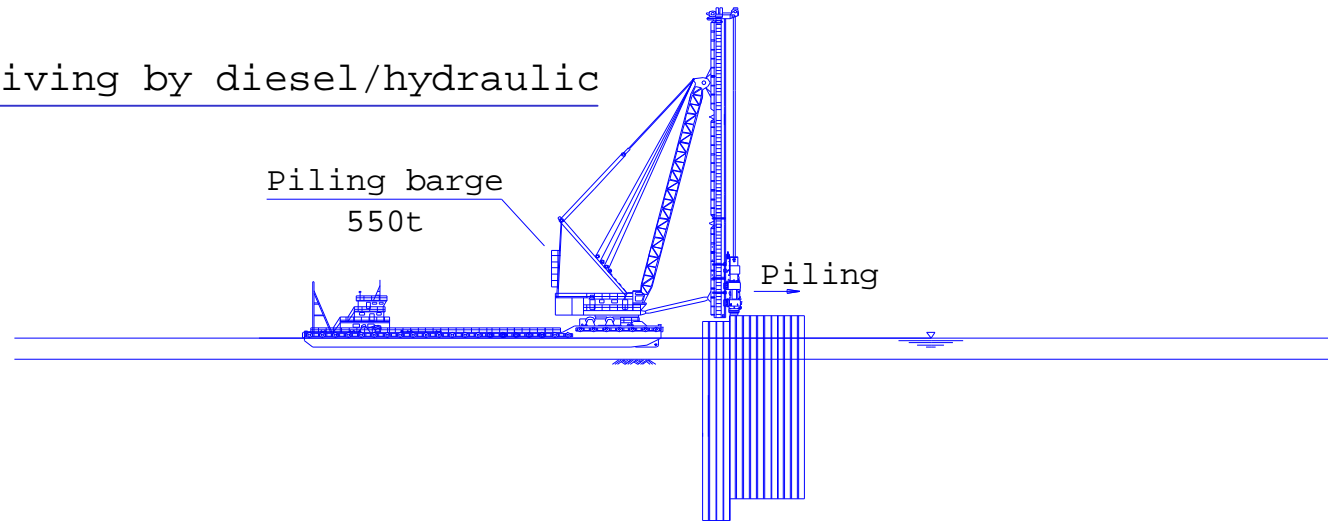
.-1.

Installation of the pile

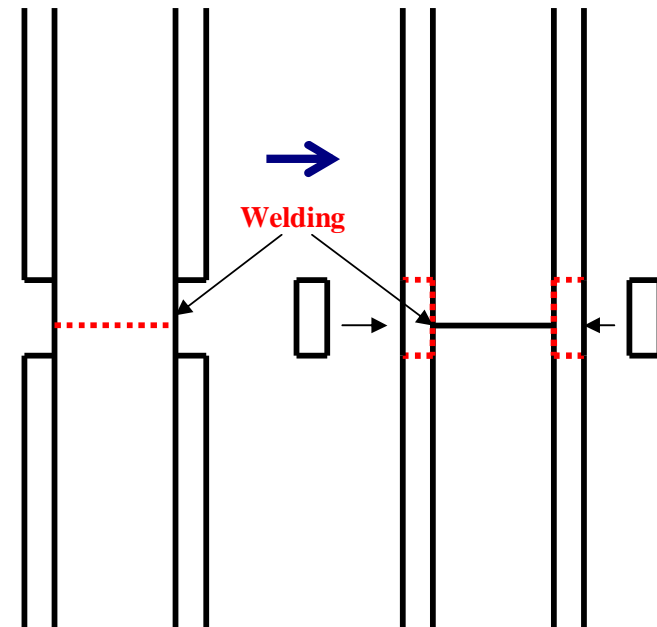
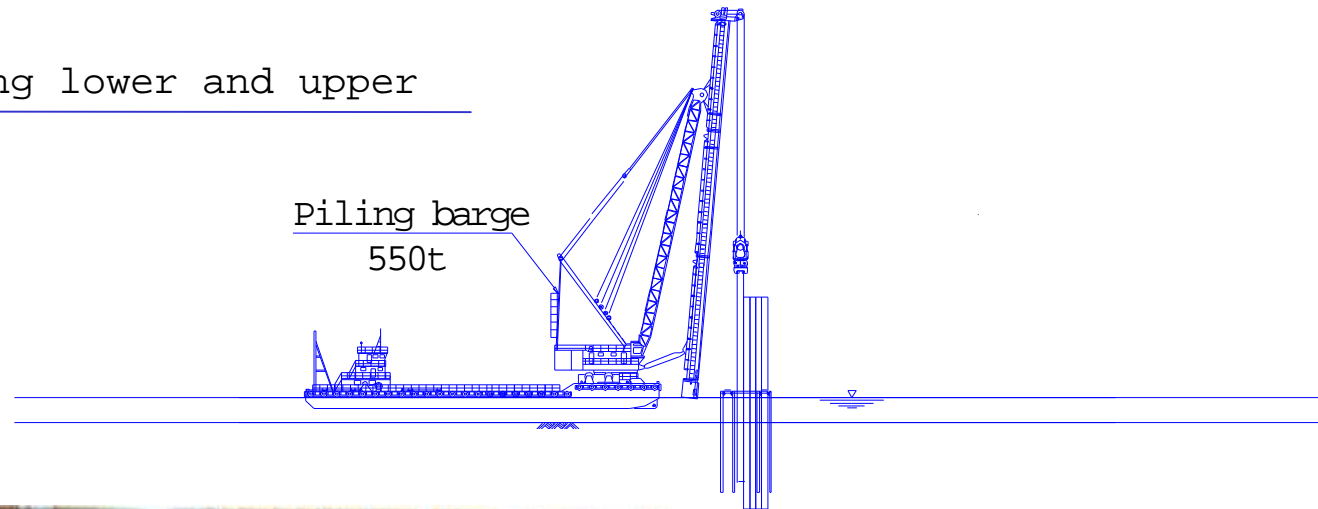


.-2.

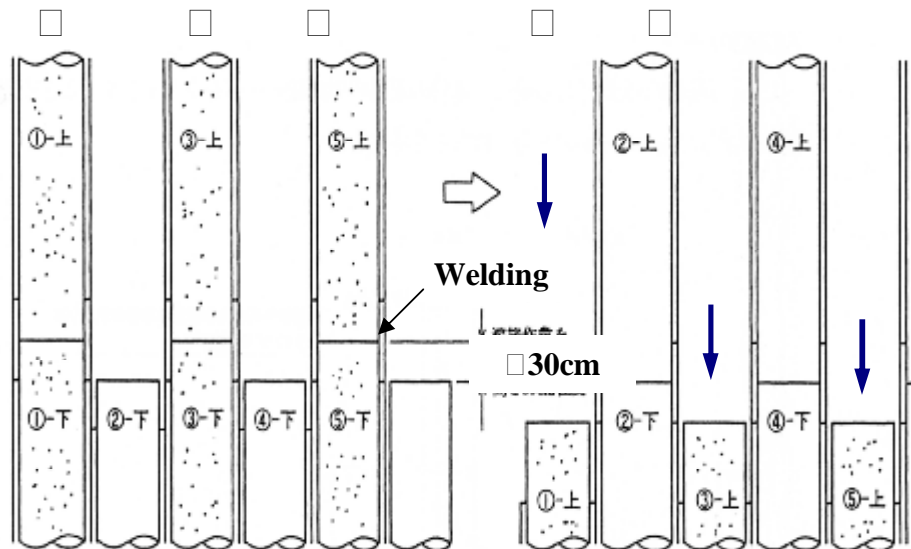
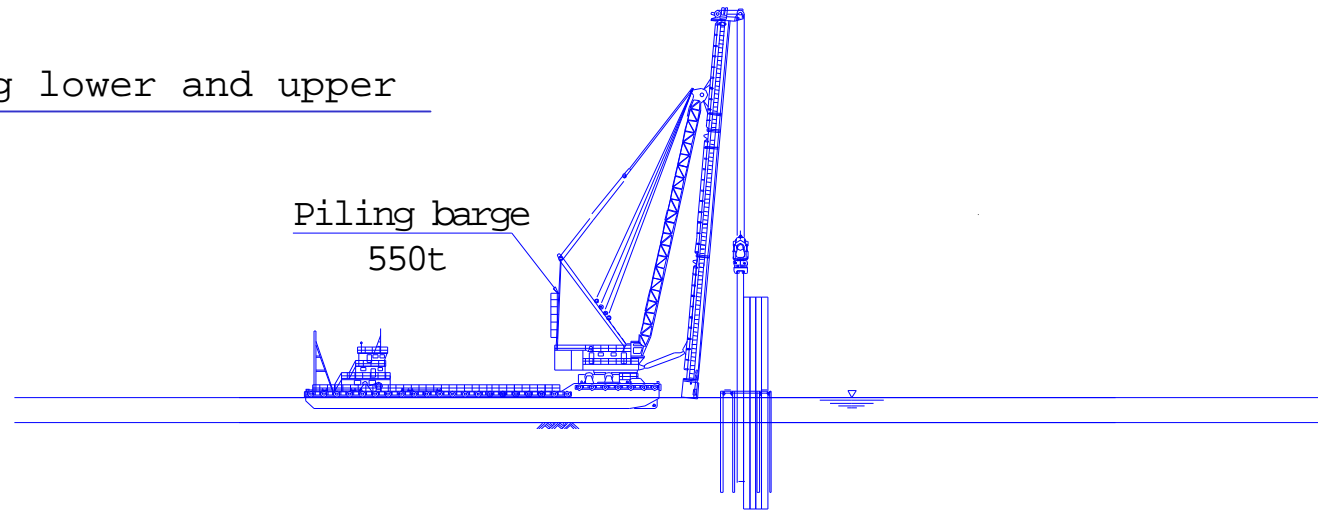
Pile driving by diesel/hydraulic hammer



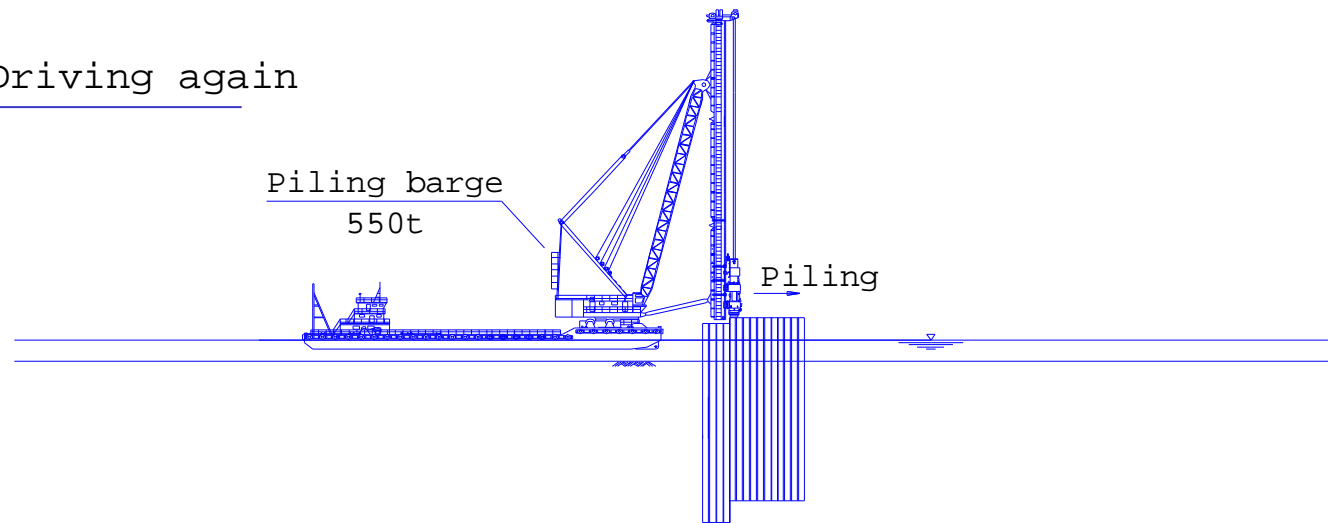
.-3) Welding lower and upper
pipes



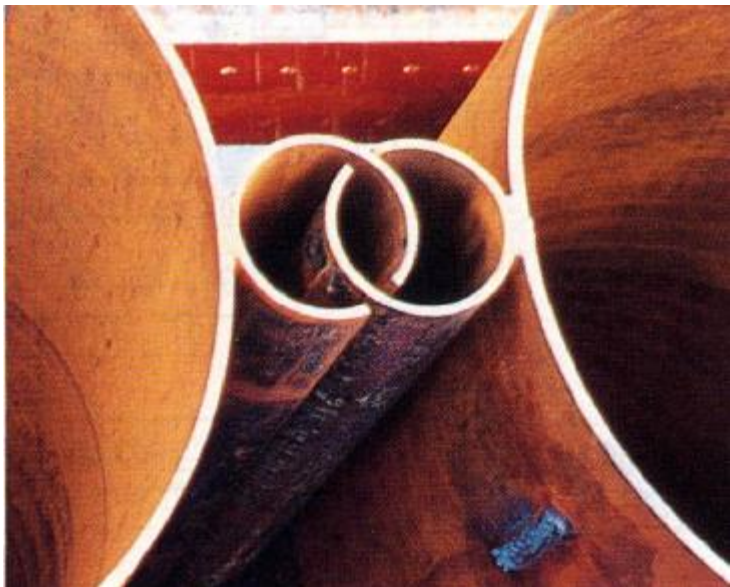
Welding lower and upper pipes



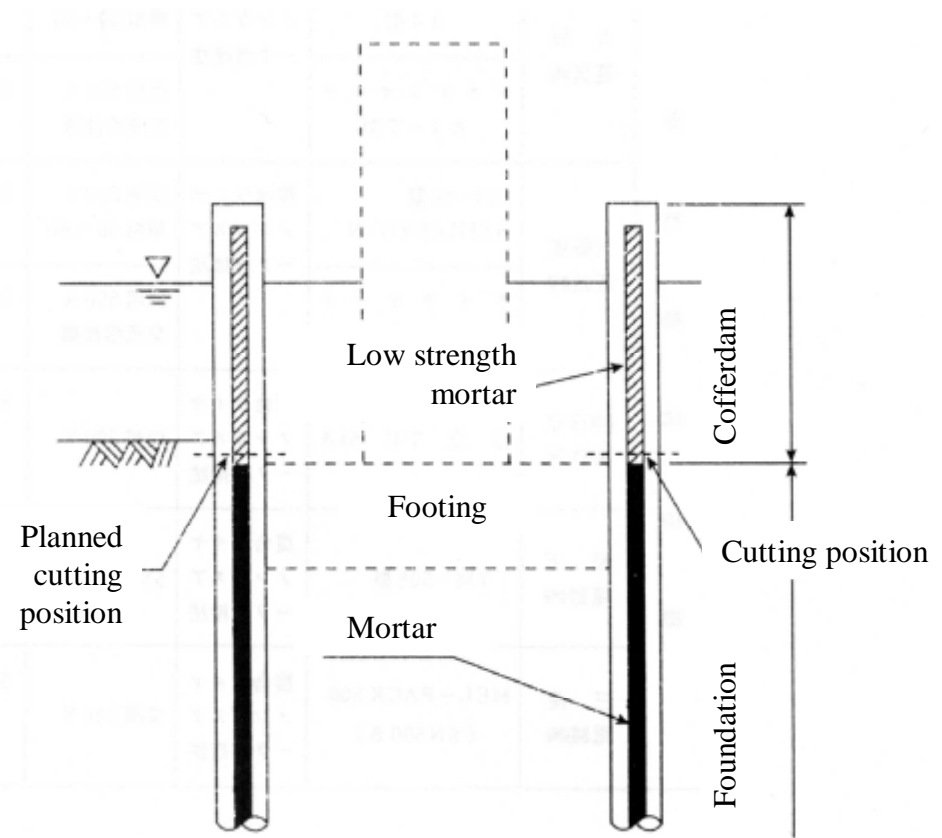
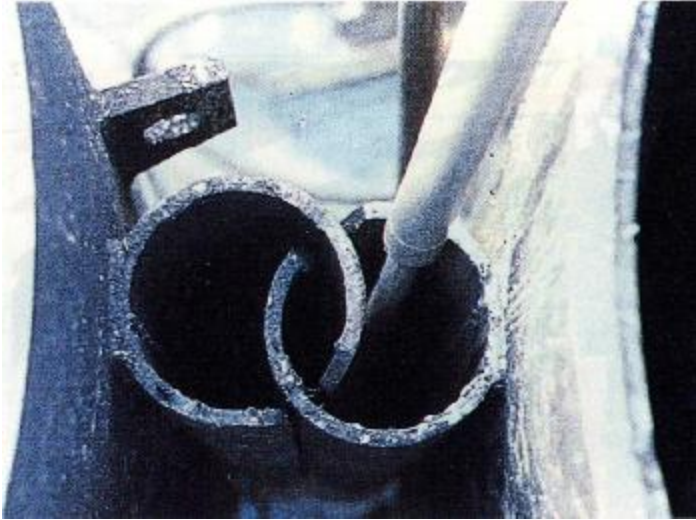
.-4) Pile Driving again



.-1) Remove soil out of joint pipes

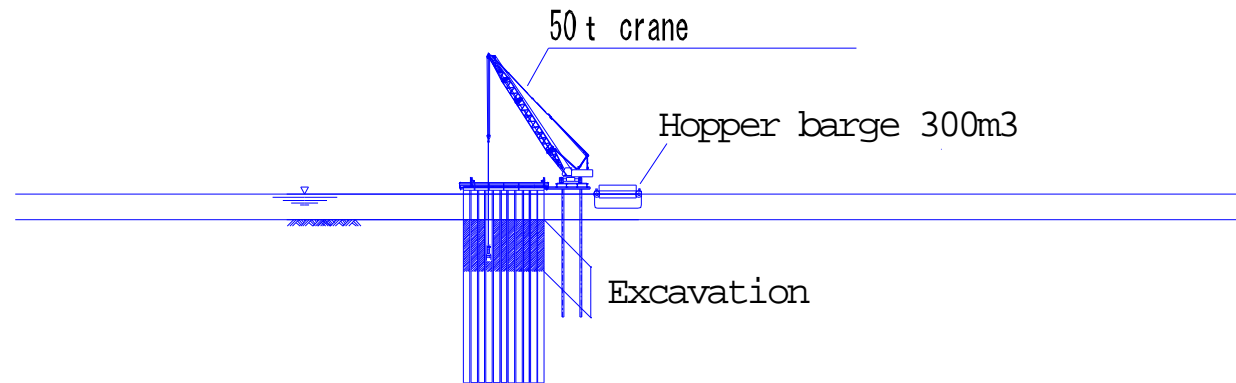


.-2) Fill joint pipes with mortar



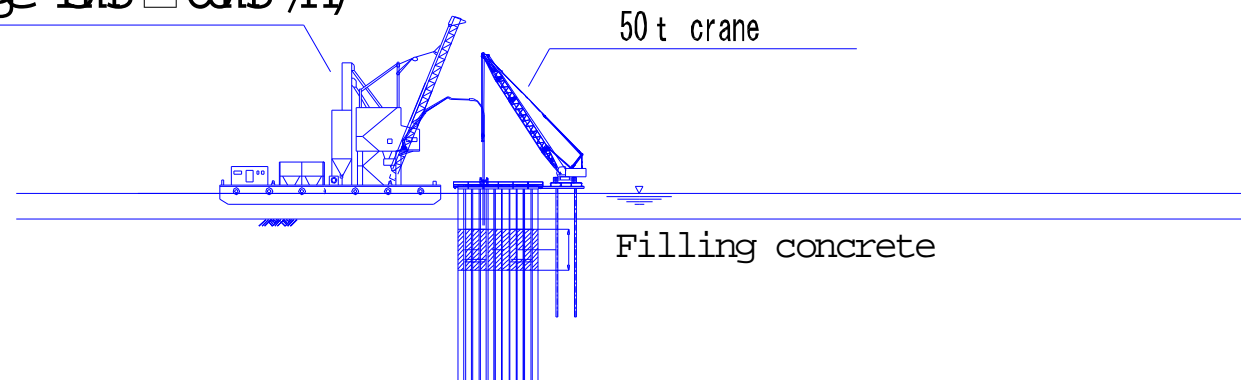
.-3) Excavation of inside the steel-pipe sheet-pile

□|Excavation by hammer grab

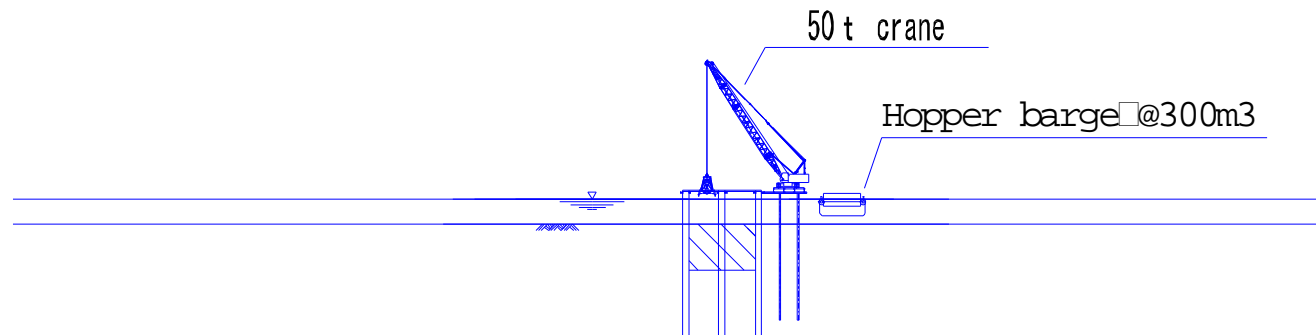


.-4) Concrete placement into the pile

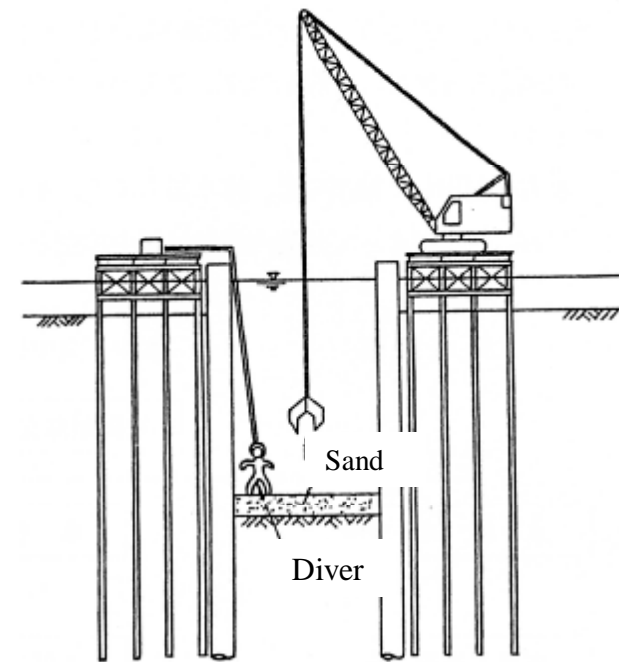
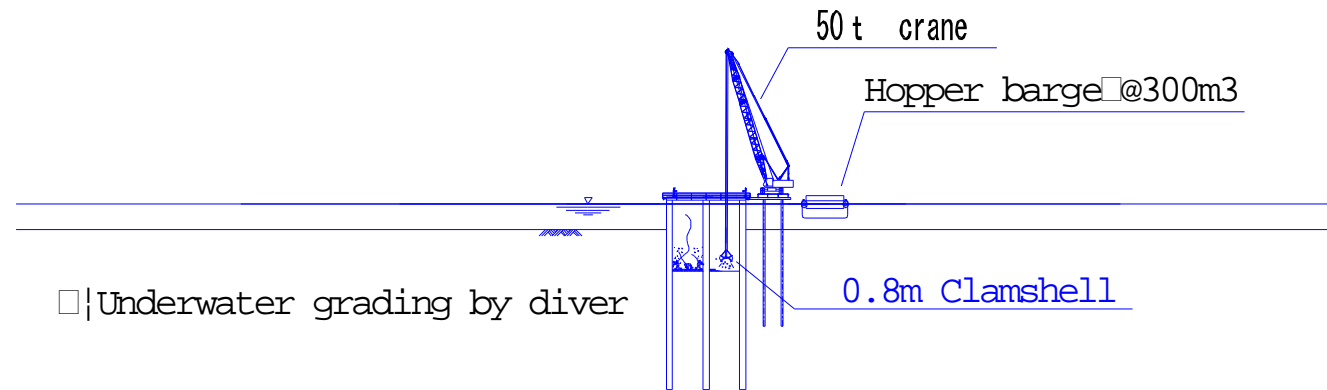
Concrete mixing barge 45m³ → 60m³ /h



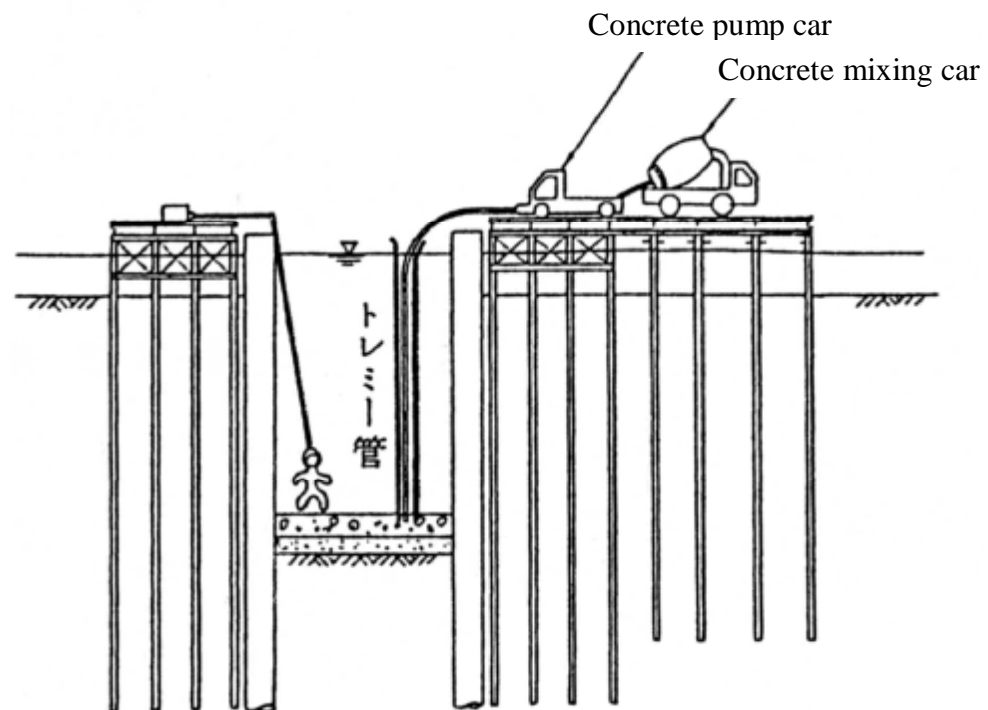
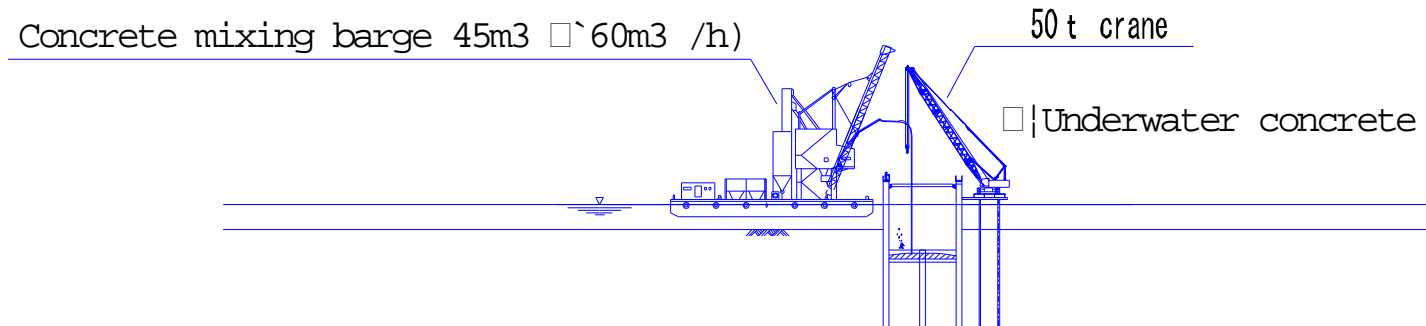
.-1) Excavation of cofferdam



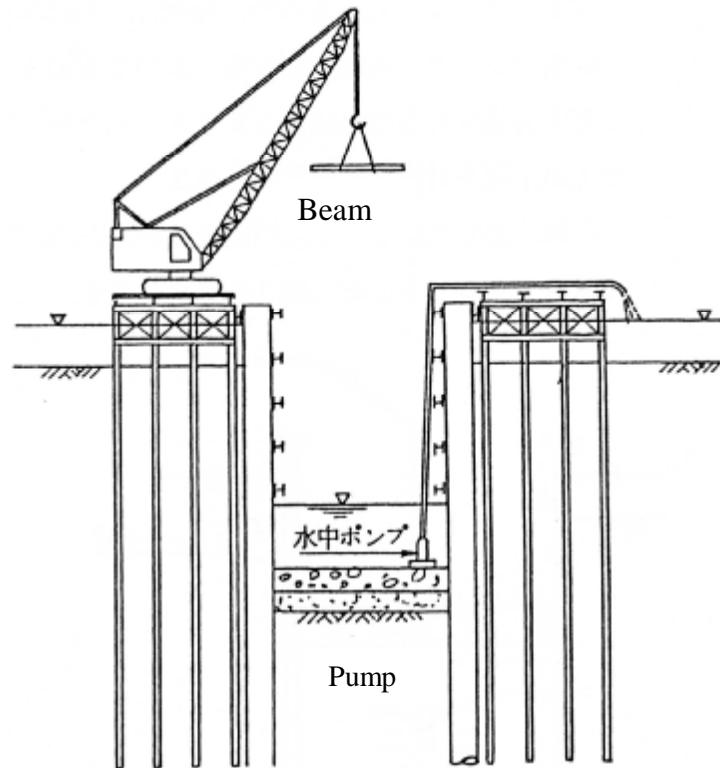
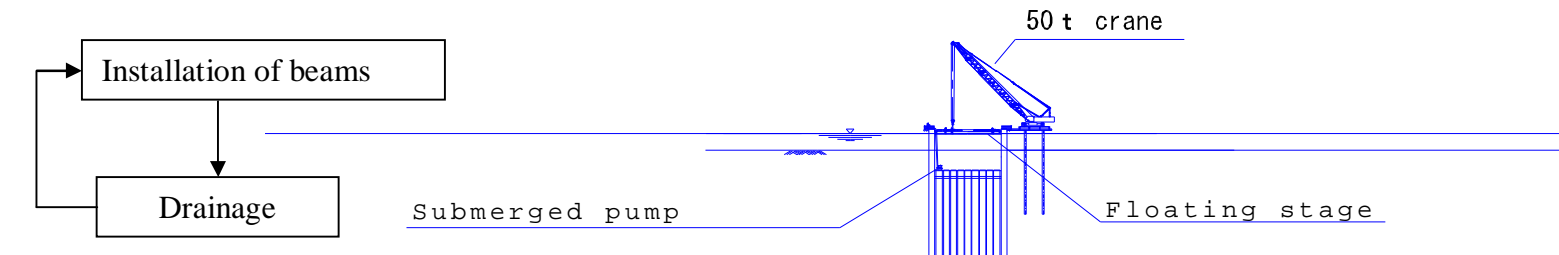
.-2) Laying sand



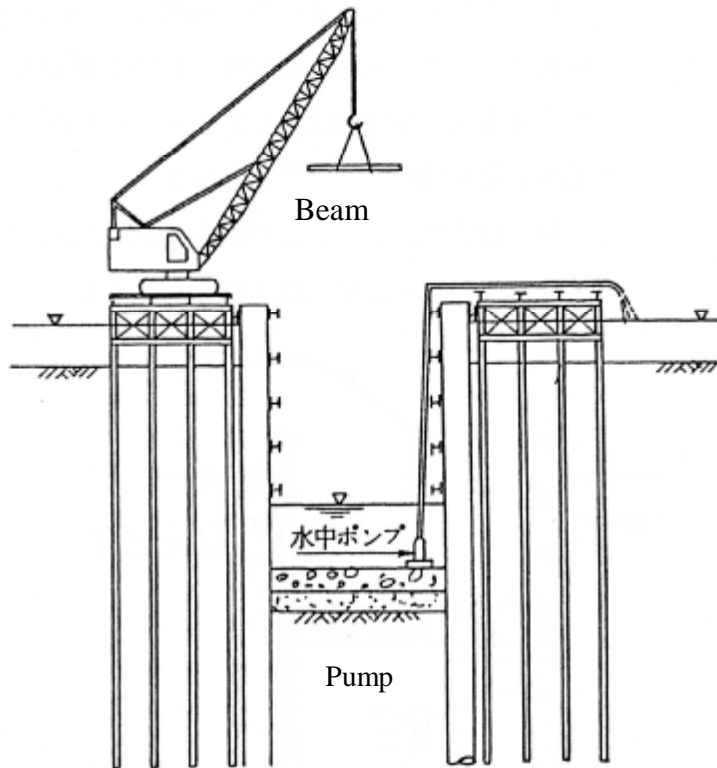
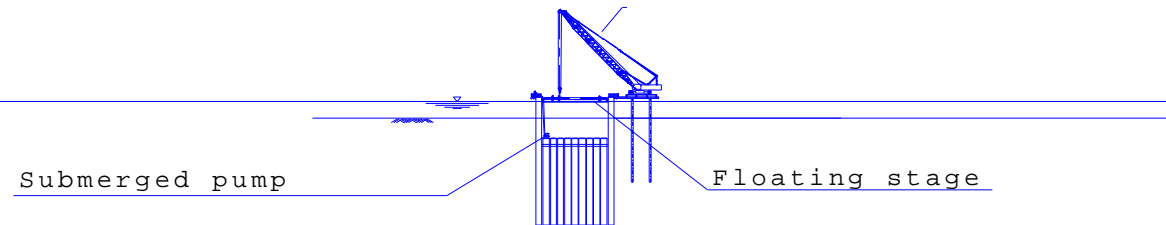
3) Bottom concrete placement



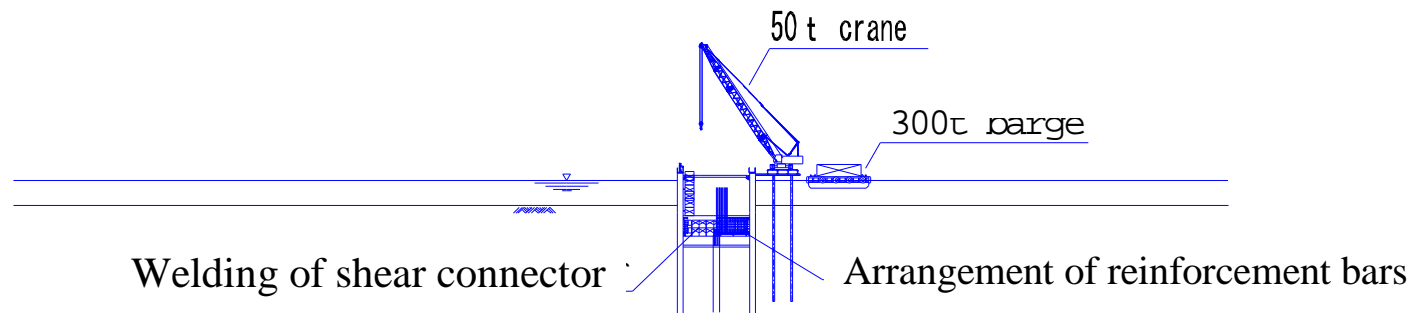
.-1) Installation of supporting beams



.-2) Pumping water up

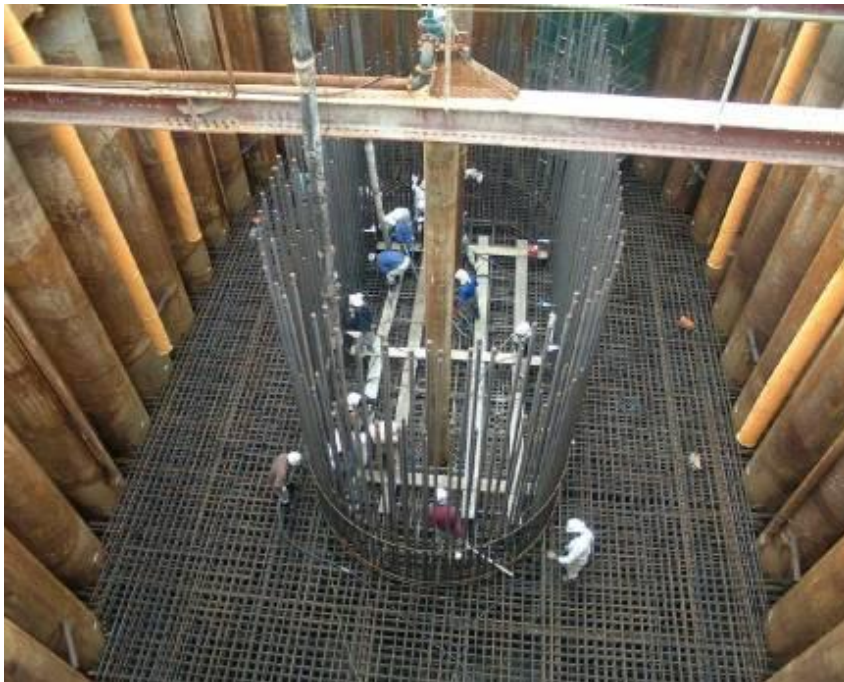
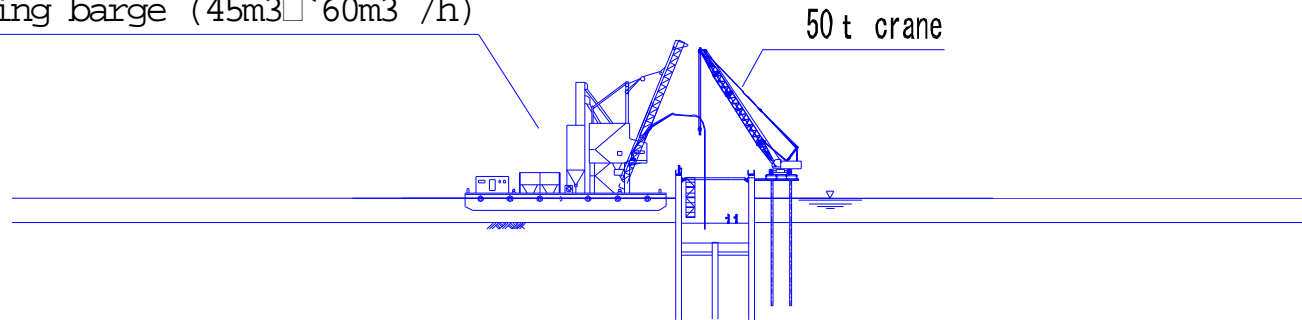


.-1) Footing works

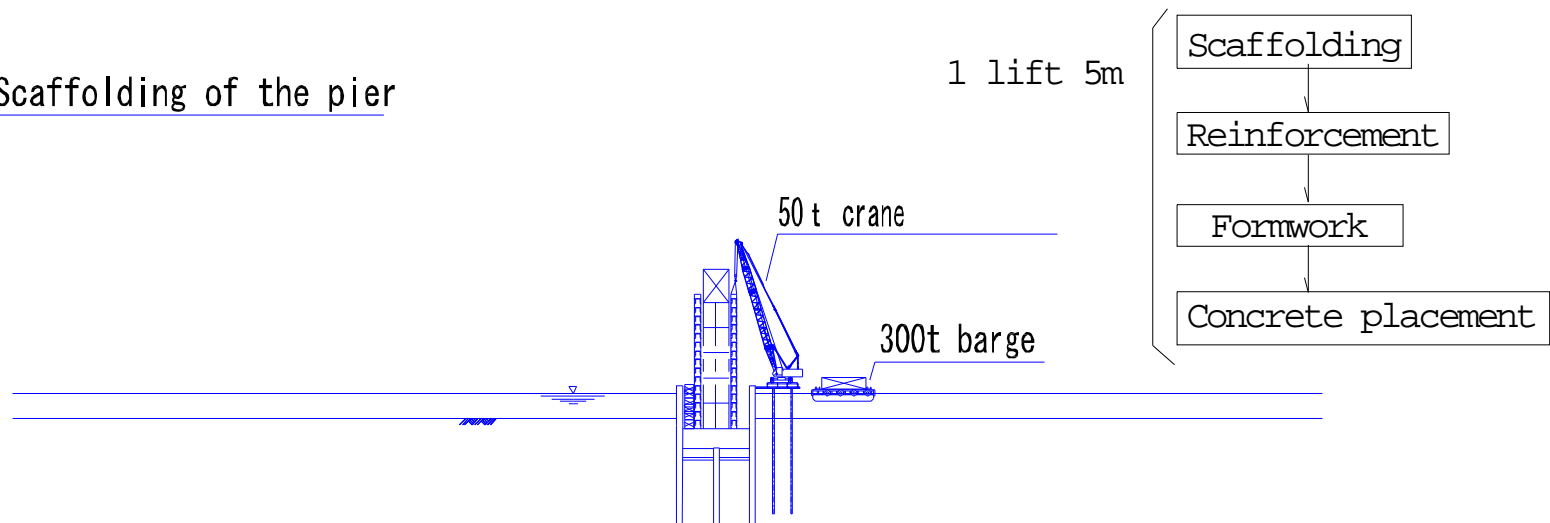


.-2) Concrete placement in the footing

Concrete mixing barge (45m³~60m³ /h)



.-1) Scaffolding of the pier



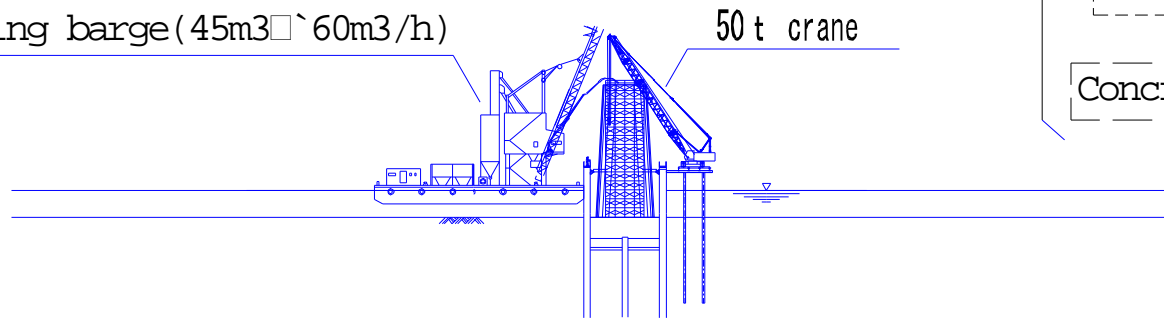
.-2)

Pier concrete placement

Concrete mixing barge (45m³~60m³/h)

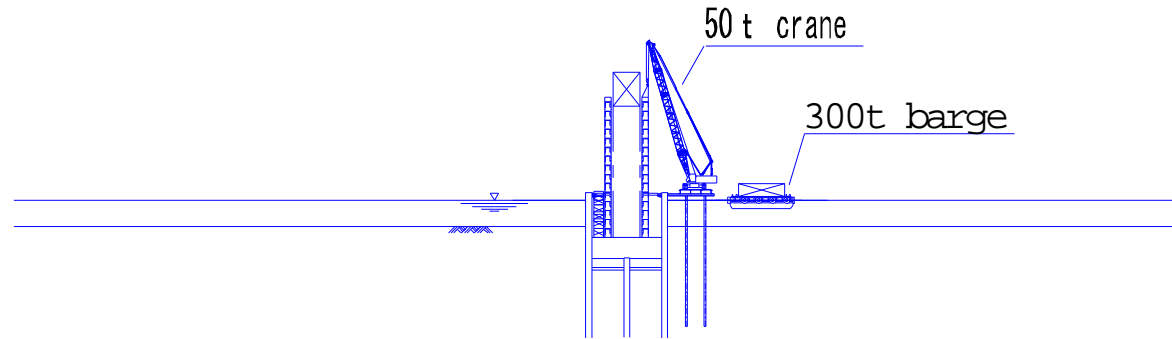
50 t crane

1 lift(5m)



.-3)

Removal of scaffolding

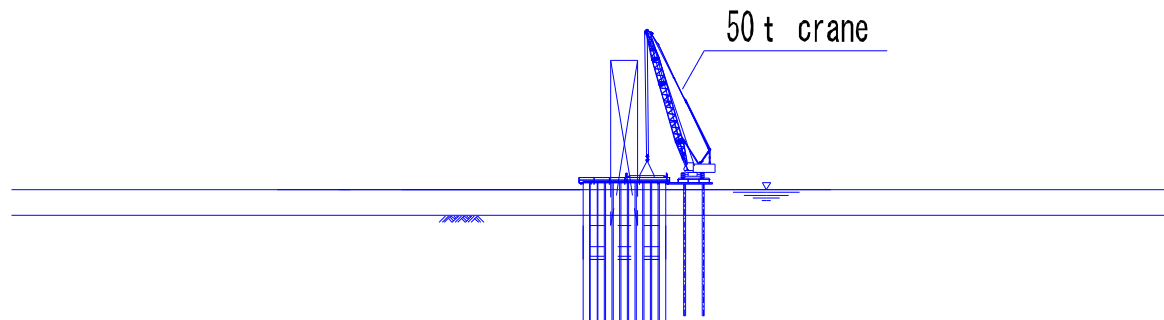


Removal of the supporting beams

Pouring water in the cofferdam



Removal of the supporting beams



Cutting and Removal of the piles for the cofferdam

