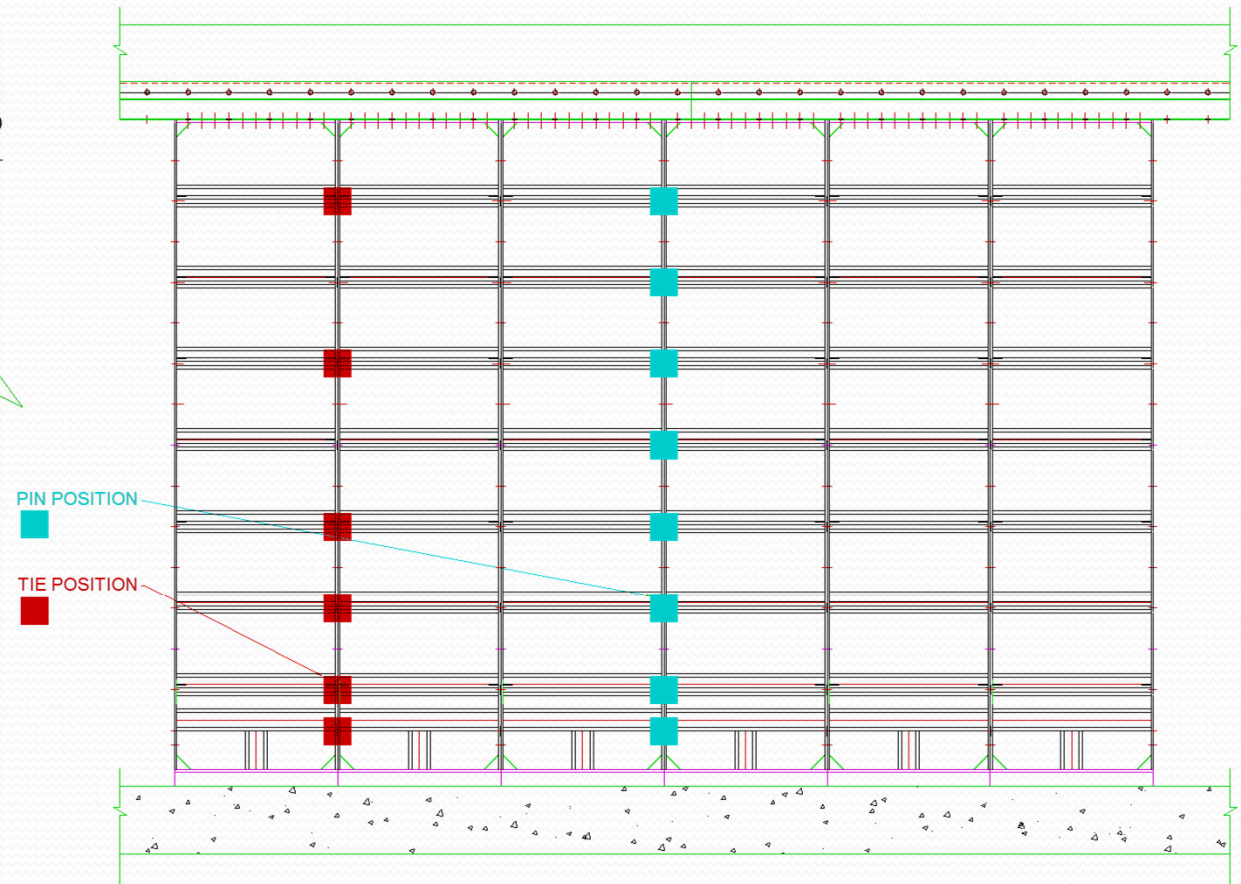
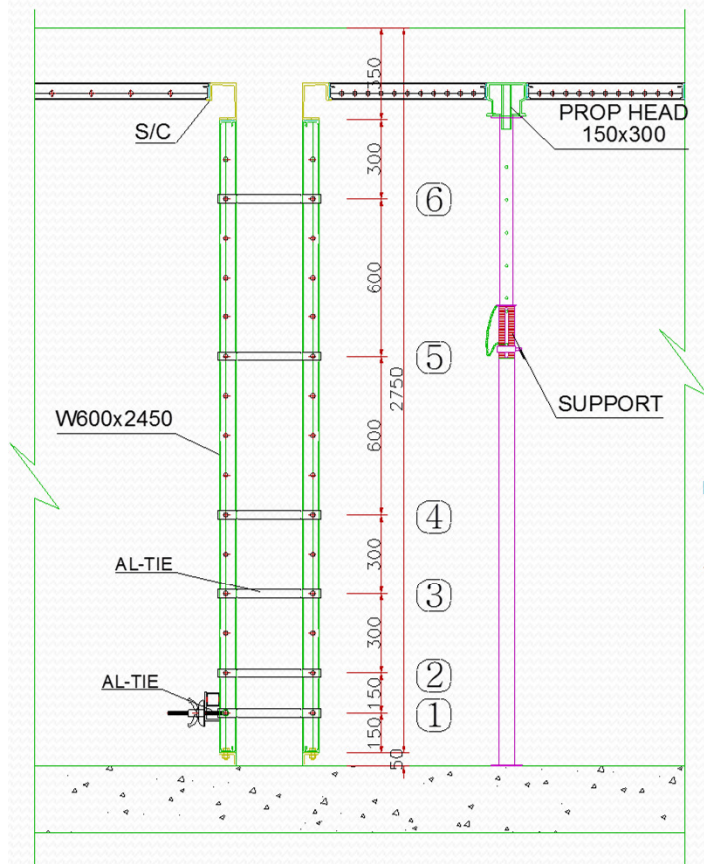


POSITION OF PIN IN KUMKANG SYSTEM

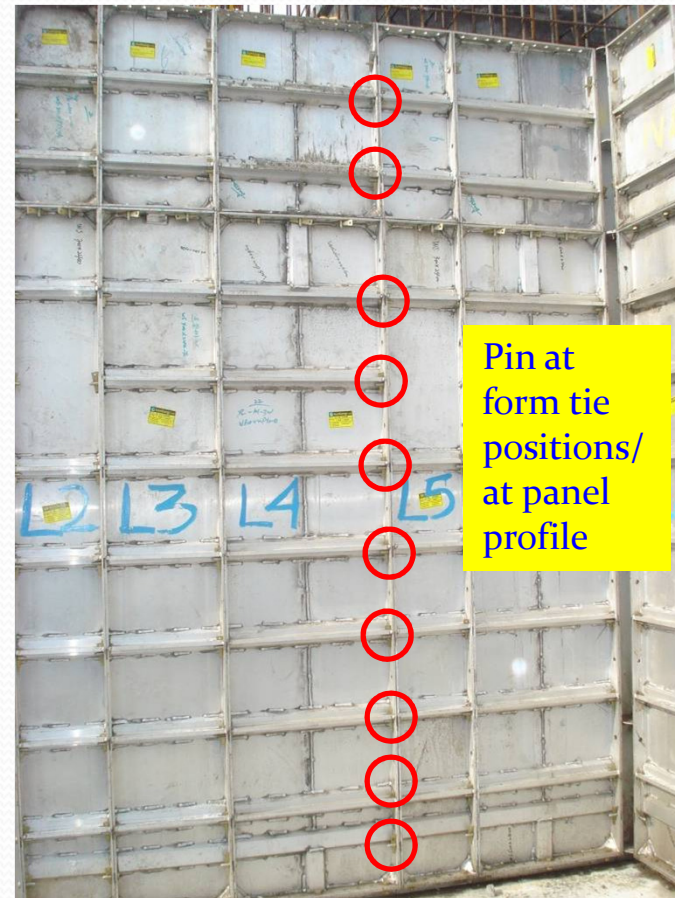
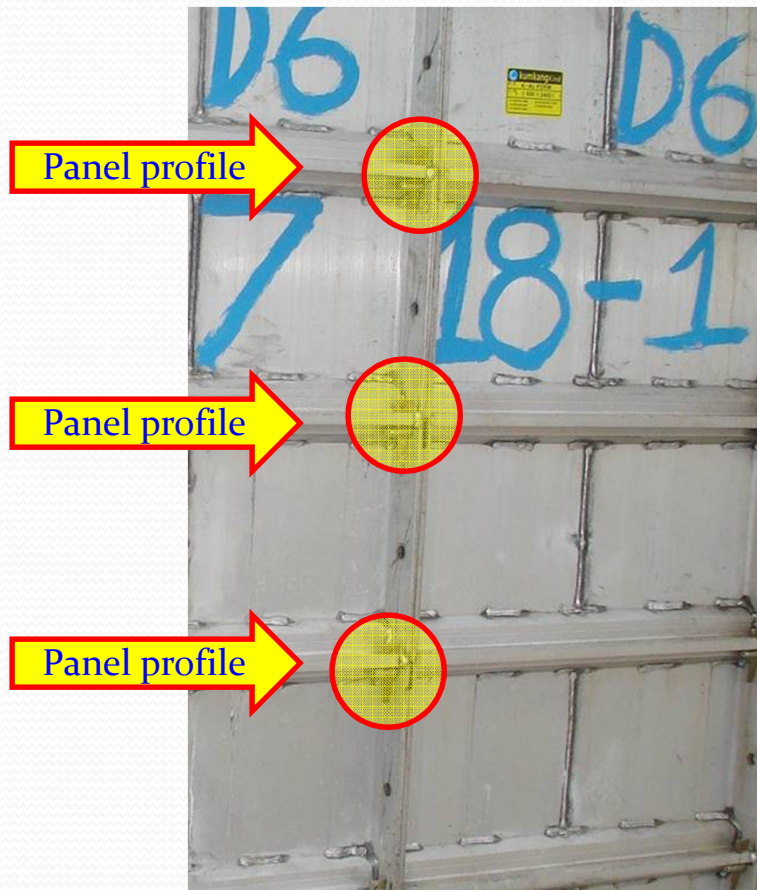
PIN OF WALL PANEL

- Fix **wall panel** with **wall panel** along panel height: pin at form-tie positions/ holes at panel profiles
- Fix **wall panel** with **wall top panel** along panel width: bolt or pin of 3 pcs/ panel 600mm width or 1 pin every 4 holes
- Fix **wall top panel** with **SC**: pin of 2 pcs/ panel 600mm width or 1 pin every 5 holes

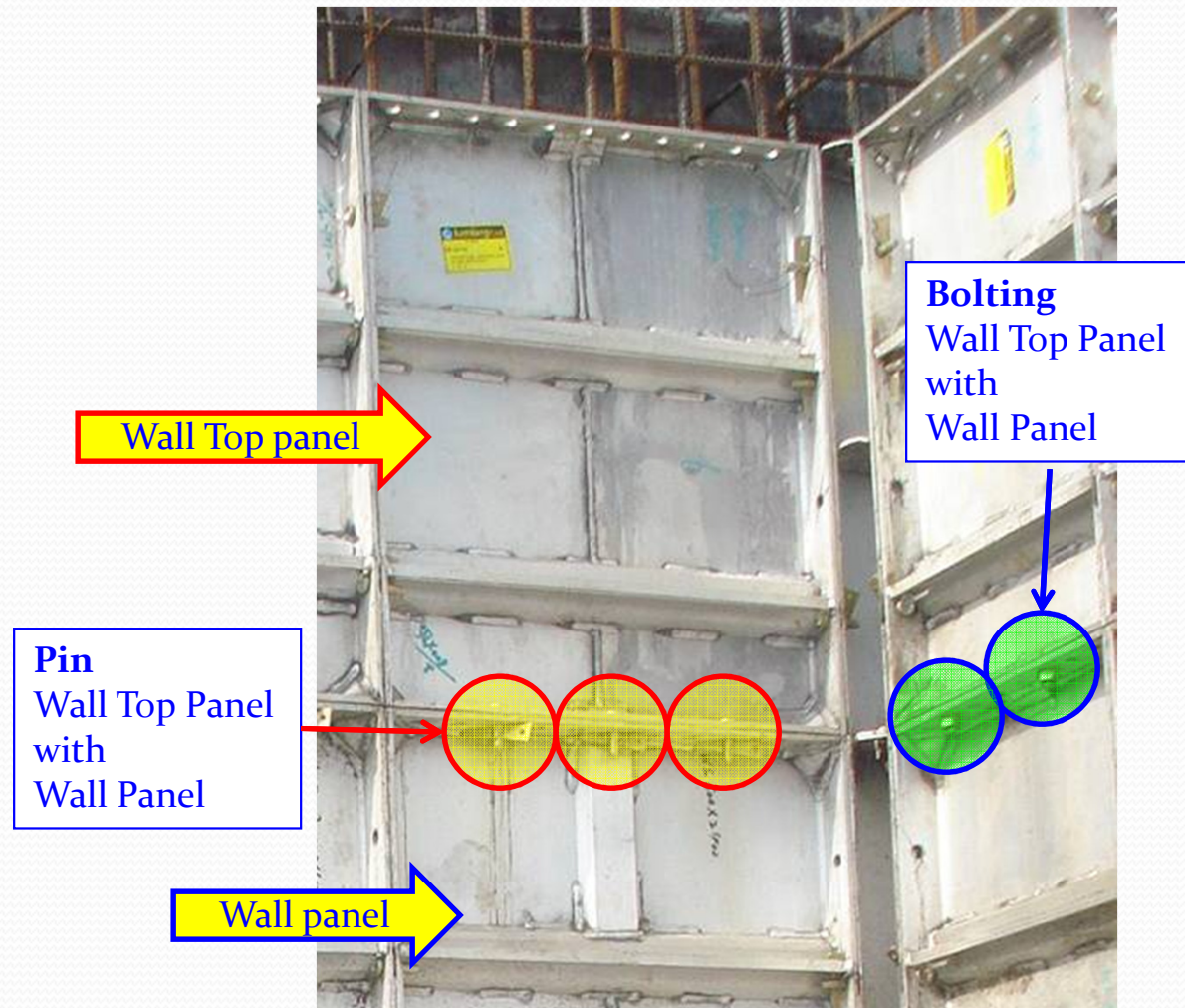
WALL PANEL with WALL PANEL



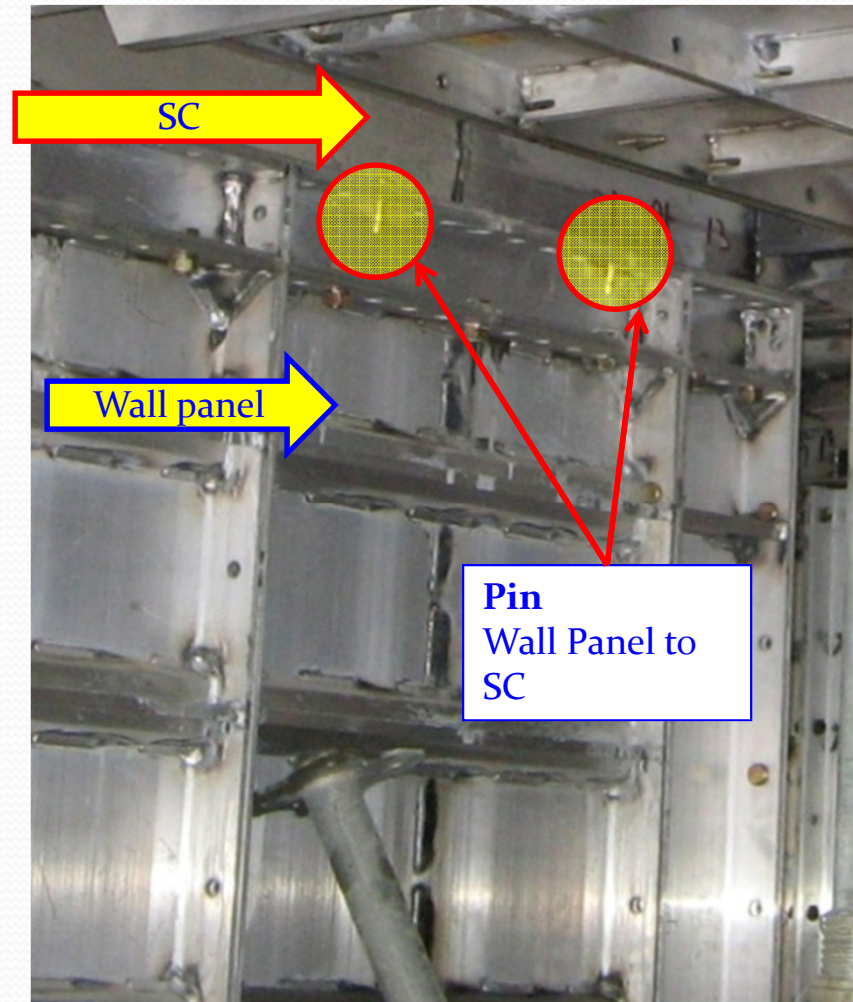
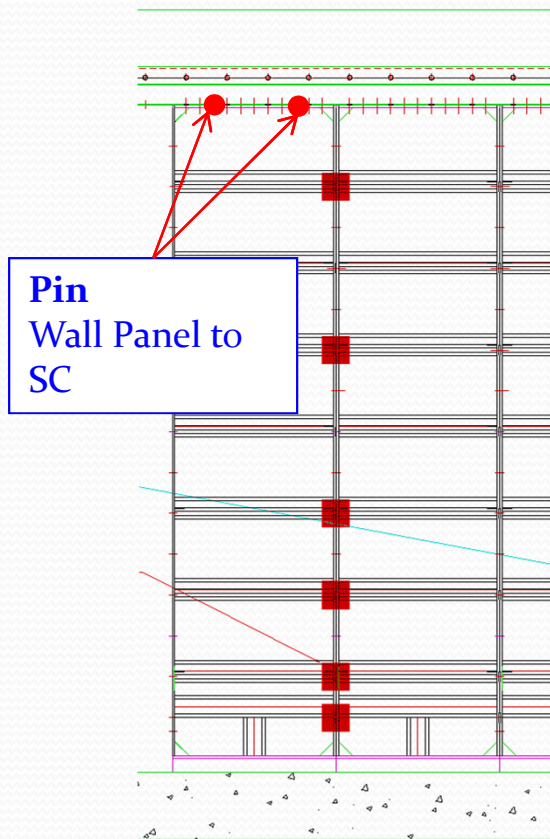
WALL PANEL with WALL PANEL



WALL PANEL with WALL TOP PANEL



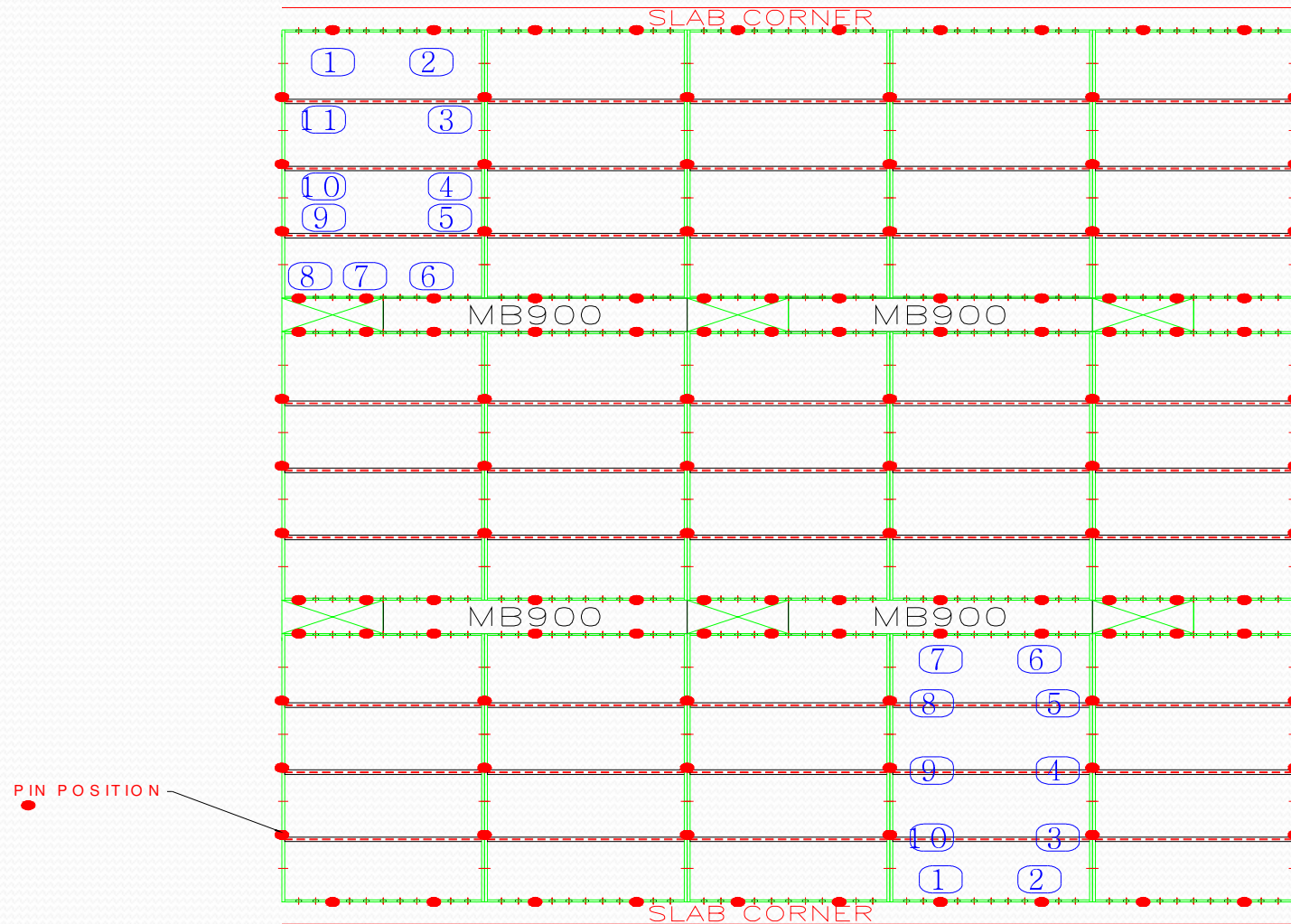
WALL PANEL to SC



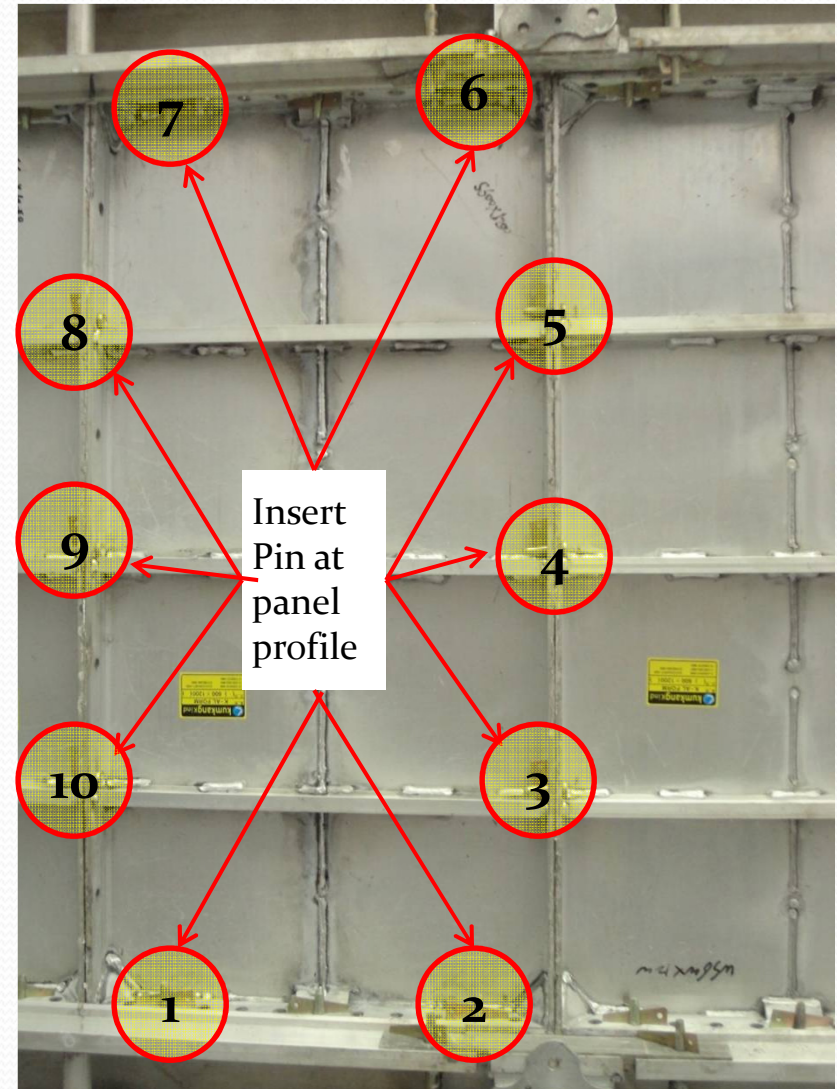
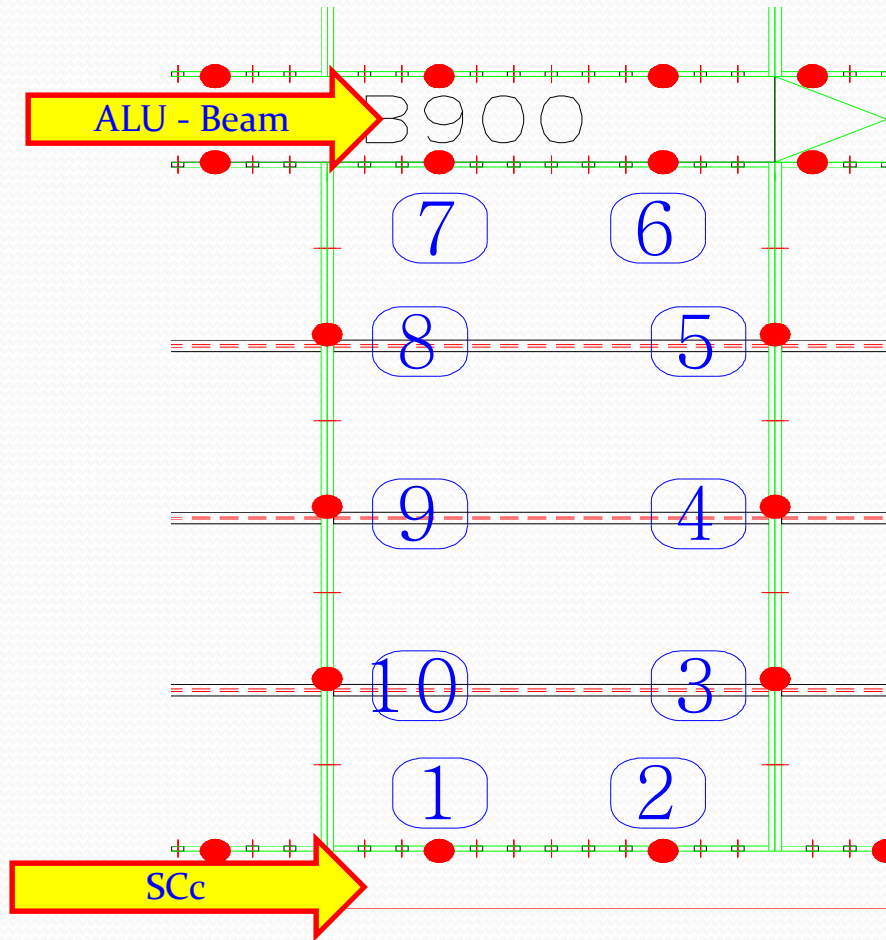
PIN OF SLAB PANEL

- Fix **slab panel** with **slab panel** along panel length: pin at panel profiles
- Fix **slab panel** to **alu-beam/ SC**: pin of 2 pcs/ panel 600mm width or 1 pin every 5 holes
- Fix **slab panel** to **prop-head**: pin at every edge of prop-head

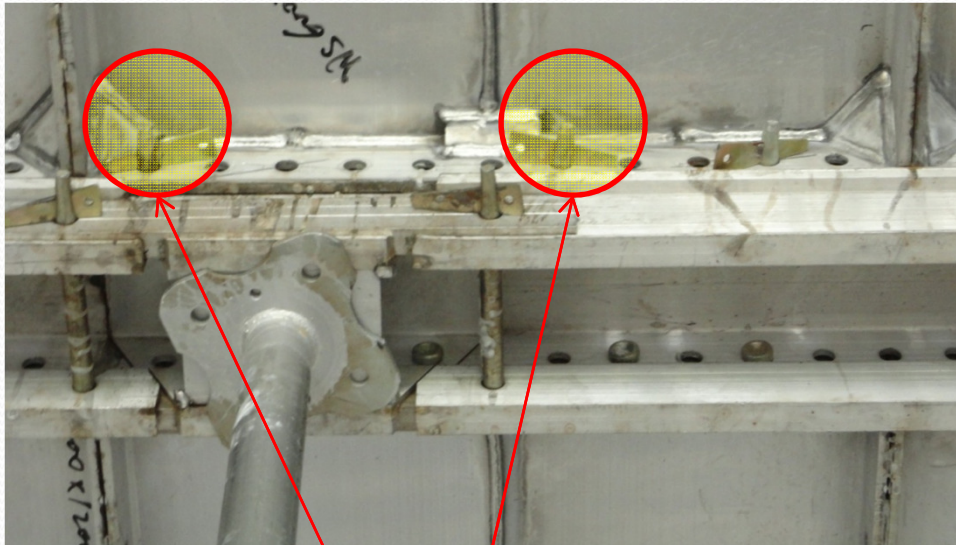
PIN OF SLAB PANEL



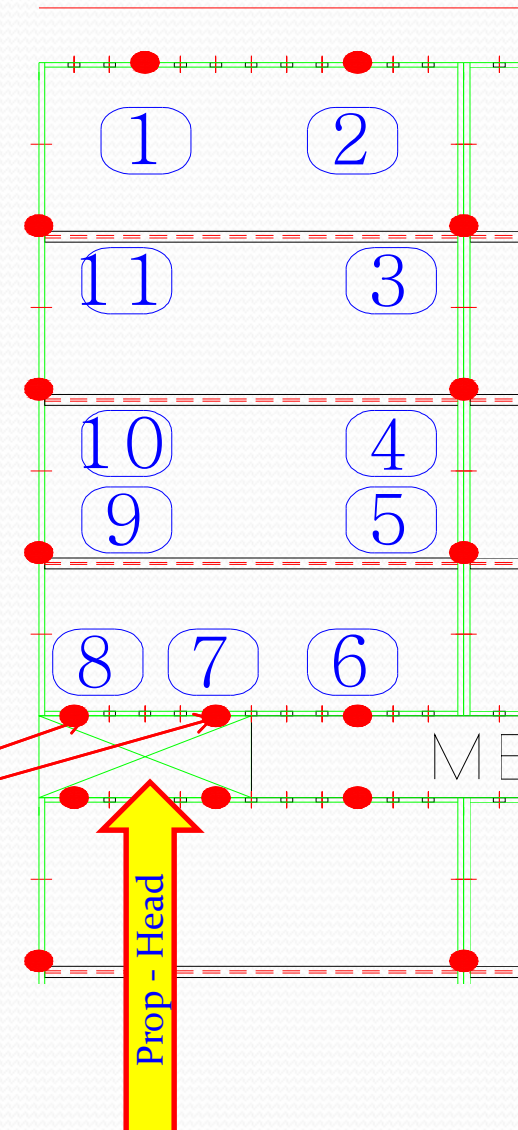
PIN OF SLAB PANEL



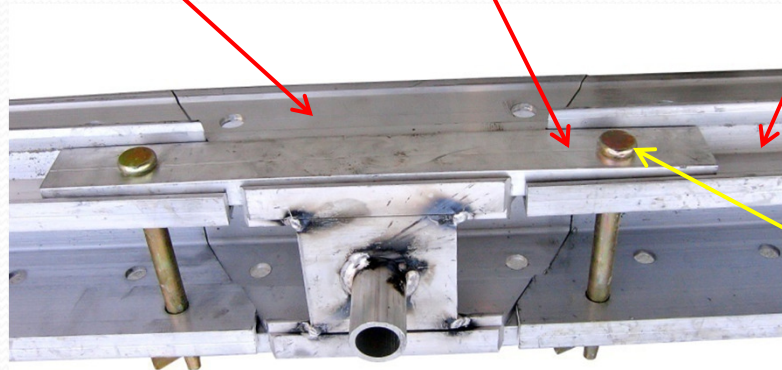
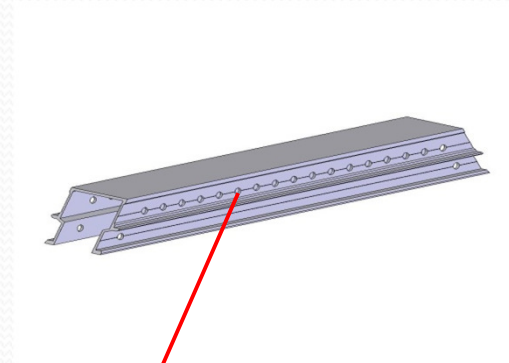
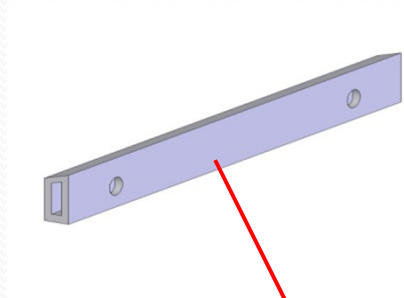
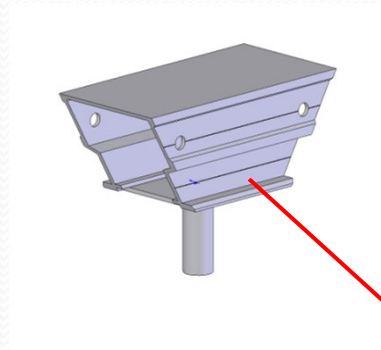
PIN SLAB PANEL to PROP-HEAD



Pin
Slab Panel to
Prop head



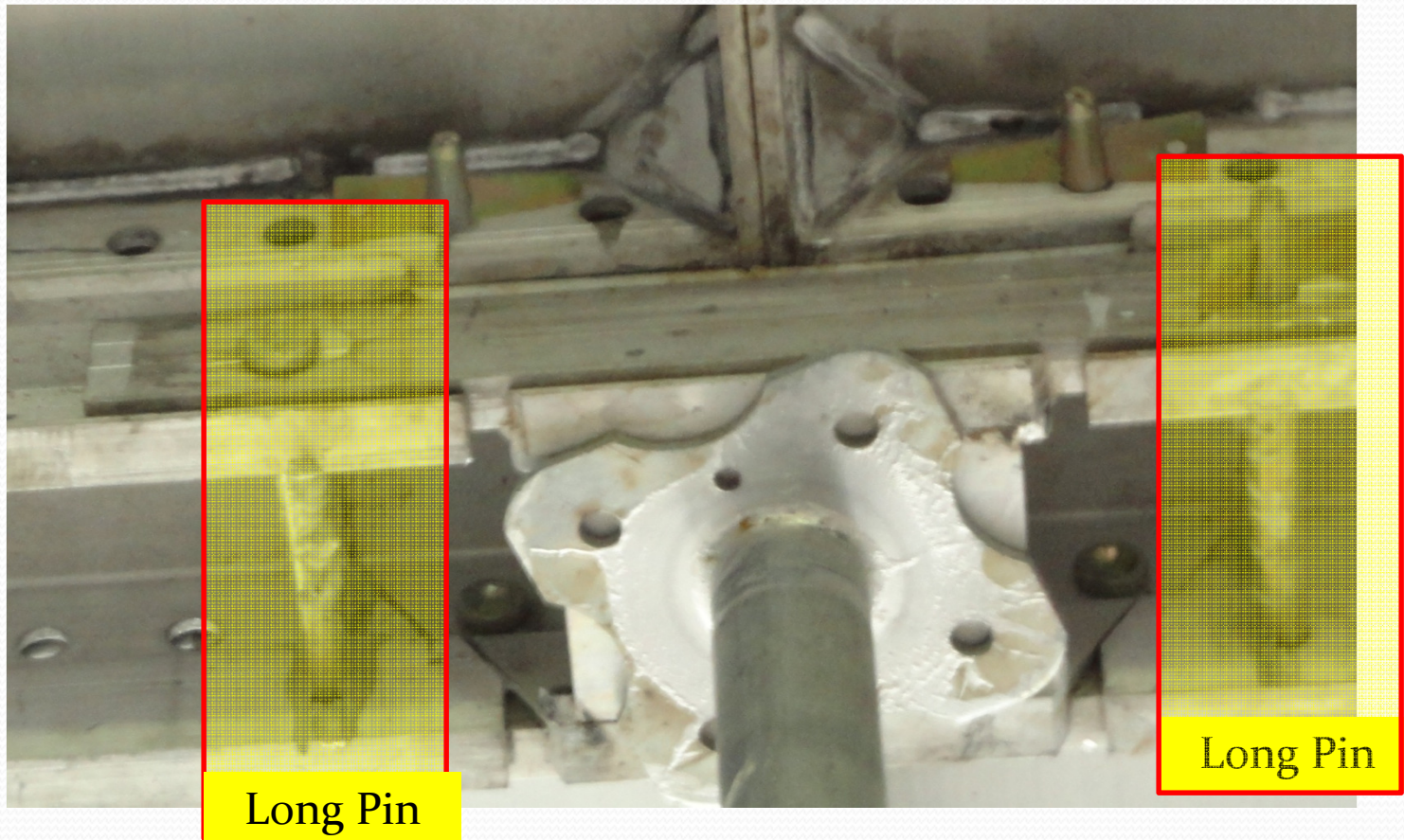
LONGPIN POSITION



Long Pin

For connecting Joint bar & Prop head

LONGPIN POSITION



For connecting Joint bar & Prop head

FULL SETTING AT SITE





THANK YOU!