

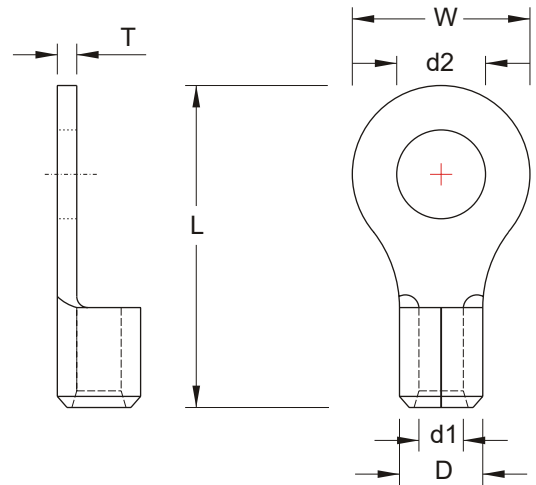
ĐẦU CỐT (COSSE) TRÒN RNB

**NON-INSULATED
RING TERMINALS**



Vật Liệu: Đồng Nguyên Chất 99.9%
Terminal Material: Copper 99.9%

Lớp Mạ Bề Mặt: Thiếc
Plating: Electro Tin Plated



Kích Thước Dây <i>Wire Range</i> <i>mm²</i>	Mã Hàng <i>Item No.</i>	Lỗ Bắt Vít <i>Stud Size (mm)</i>	Kích thước <i>Dimensions (mm)</i>					
		d2	W	d1	D	L	T	
0.5~1.5 mm ²	RNB1-3.2	3.2	5.5	1.7	3.5	12.5	0.75	
	RNBL1-3.2	3.2	8.0			15.8		
	RNBS1-3.7	3.7	5.5			12.5		
	RNBM1-3.7	3.7	6.6			14.4		
	RNBL1-3.7	3.7	8.0			15.8		
	RNBS1-4	4.3	6.6			14.4		
	RNBL1-4	4.3	8.0			15.8		
	RNB1-5	5.3						
	RNBL1-5	5.3	11.6			21.8		
	RNB1-6	6.4	11.5					
	RNB1-8	8.4	11.6					
	RNBL1-8	8.4	13.6			25.5		
	RNB1-10	10.5				19.2	30.4	
	RNBL1-10	10.5						
	RNB1-12	13.0	27.0			39.3	0.8	
	RNB1-14	15.0						
	RNB1-16	17.0						
	RNB1-20	21.0						
1.5~2.5 mm ²	RNB2-3.2	3.2	6.6	2.3	4.1	12.8	0.8	
	RNBL2-3.2	3.2	8.5			16.8		
	RNBS2-3.7	3.7	6.6			12.8		
	RNBM2-3.7	3.7				14.4		
	RNBL2-3.7	3.7	8.5			16.5		
	RNBS2-4	4.3	6.6			14.4		
	RNB2-4	4.3	8.5			16.5		0.8
	RNBL2-4	4.3						
	RNBS2-5	5.3						
	RNBL2-5	5.3	9.5			17.0		
	RNB2-6	6.4	12.0			21.8		
	RNB2-8	8.4						
	RNBL2-8	8.4	13.6			25.5		
	RNB2-10	10.5				30.4		
	RNB2-12	13.0	19.2			39.3		
	RNB2-14	15.0	27.0					
	RNB2-16	17.0						
	RNB2-20	21.0						

NON-INSULATED RING TERMINALS

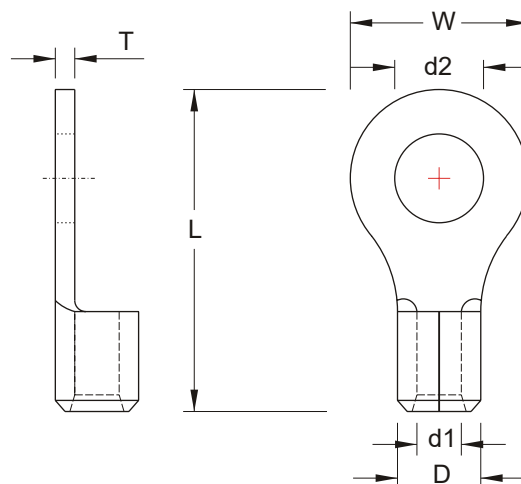


Vật Liệu: Đồng Nguyên Chất 99.9%

Terminal Material: Copper 99.9%

Lớp Mạ Bề Mặt: Thiếc

Plating: Electro Tin Plated



Kích Thước Dây Wire Range mm ²	Mã Hàng Item No.	Lỗ Bắt Vít Stud Size (mm)	Kích thước Dimensions (mm)				
		d2	W	d1	D	L	T
2.5~4 mm	RNBS3-3.2	3.2	5.5	2.9	5.1	16.8	1.0
	RNB3-3.2	3.2	8.0			18.0	
	RNBS3-4	4.3	7.2			17.6	
	RNB3-4	4.3	8.0			18.0	
	RNBS3-5	5.3	9.5			20.0	
	RNBM3-5	5.3	12.0			21.4	
	RNBL3-5	5.3	15.0			27.0	
	RNB3-6	6.4	19.2			31.6	
	RNB3-8	8.4					
	RNB3-10	10.5					
4~6 mm ²	RNBS3-12	13.0		3.4	5.6		1.0
	RNB5-3.2	3.2	7.2			15.5	
	RNB5-3.7	3.7	9.5			15.7	
	RNBL5-3.7	3.7	7.2			19.0	
	RNBS5-4	4.3	9.5			15.7	
	RNBL5-4	4.3	8.8			19.0	
	RNBS5-5	5.3	9.5			24.8	
	RNB5-5	5.3	12.4			22.5	
	RNBL5-5	5.3	15.0			25.0	
	RNB5-6	6.4	19.2			24.7	
	RNBM5-6	6.4	32.0			27.0	
	RNBS5-8	8.4				31.6	
	RNB5-8	8.4				47.2	
	RNBS5-10	10.5					
	RNB5-10	10.5					
	RNB5-12	13.0					
	RNB5-14	15.0					
	RNB5-16	17.0					
	RNB5-18	19.0					
	RNB5-20	21.0					

NON-INSULATED RING TERMINALS

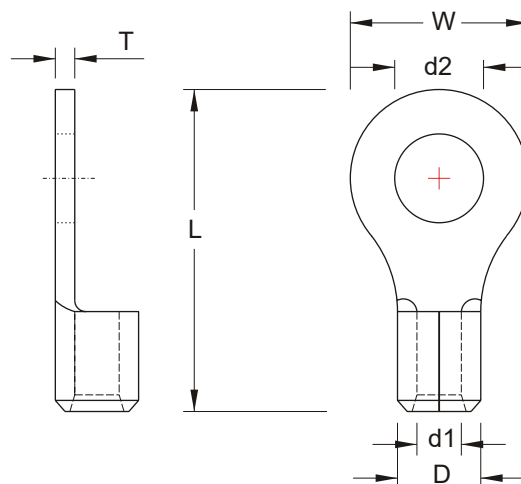


Vật Liệu: Đồng Nguyên Chất 99.9%

Terminal Material: Copper 99.9%

Lớp Mạ Bề Mặt: Thiếc

Plating: Electro Tin Plated



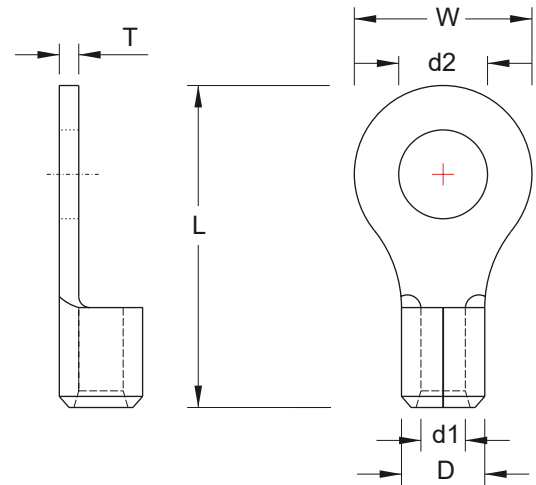
Kích Thước Dây Wire Range mm ²	Mã Hàng Item No.	Lỗ Bắt Vít Stud Size (mm)	Kích thước Dimensions (mm)				
		d2	W	d1	D	L	T
8 mm ² (6.64~10.52)	RNB8-3.7	3.7	8.0	4.5	7.2	21.5	1.2
	RNBS8-4	4.3					
	RNBL8-4	4.3	12.0				
	RNBS8-5	5.3	8.8			23.8	
	RNBM8-5	5.3	12.0				
	RNBL8-5	5.3	15.0			29.8	
	RNBS8-6	6.4	12.0			23.3	
	RNBL8-6	6.4	15.0			29.2	
	RNB8-8	8.4					
	RNB8-10	10.5	33.5				
	RNB8-11	11.5					
	RNB8-12	13.0	49.5				
	RNB8-14	15.0					
	RNB8-16	17.0					
	RNB8-18	19.0					
	RNB8-20	21.0					
	RNB8-22	23.0					
14 mm ² (10.52~16.78)	RNB14-4	4.3	12.0	5.8	9.0	29.2	1.5
	RNBS14-5	5.3	9.5			28.2	
	RNB14-5	5.3	12.0			29.2	
	RNBS14-6	6.4					
	RNBL14-6	6.4	16.0			32.5	
	RNB14-8	8.4					
	RNB14-10	10.5	22.0			41.0	
	RNB14-11	11.5					
	RNB14-12	13.0	31.6			51.0	
	RNB14-14	15.0					
	RNB14-16	17.0					
	RNB14-18	19.0					
	RNB14-20	21.0					

NON-INSULATED RING TERMINALS



Vật Liệu: Đồng Nguyên Chất 99.9%
Terminal Material: Copper 99.9%

Lớp Mạ Bề Mặt: Thiếc
Plating: Electro Tin Plated



Kích Thước Dây Wire Range mm ²	Mã Hàng Item No.	Lỗ Bắt Vít Stud Size (mm)	Kích thước Dimensions (mm)				
		d2	W	d1	D	L	T
22 mm ² (16.78~26.66)	RNBS22-4	4.3	12.2	7.7	11.5	33.2	1.7
	RNB22-4	4.3					
	RNBS22-5	5.3					
	RNBL22-5	5.3	16.5			33.5	
	RNBS22-6	6.4	12.2			33.0	
	RNBL22-6	6.4	16.5			33.5	
	RNBS22-8	8.4	12.2			33.2	
	RNB22-8	8.4	16.5			33.5	
	RNB22-10	10.5					
	RNBL22-10	10.5	17.5			36.7	
	RNB22-11	11.5	22.0			42.5	
	RNB22-12	13.0					
	RNB22-14	15.0	30.0			51.0	
	RNB22-16	17.0					
	RNB22-18	19.0					
	RNB22-20	21.0					
	RNB22-22	23.0					
38 mm ² (26.66~42.42)	RNB38-5	5.3	15.3	9.4	13.3	39.0	1.8
	RNBS38-6	6.3					
	RNBL38-6	6.4	22.0			42.7	
	RNBS38-8	8.4	15.3			39.0	
	RNBL38-8	8.4	22.0			42.7	
	RNBS38-10	10.5	15.3			38.8	
	RNBL38-10	10.5	22.0			42.7	
	RNB38-11	11.5					
	RNB38-12	13.0					
	RNB38-13	14.0	30.0			52.0	
	RNB38-14	15.0					
	RNB38-16	17.0					
	RNB38-18	19.0					
	RNB38-20	21.0					
	RNB38-22	23.0					
	RNB38-24	25.0					

NON-INSULATED RING TERMINALS

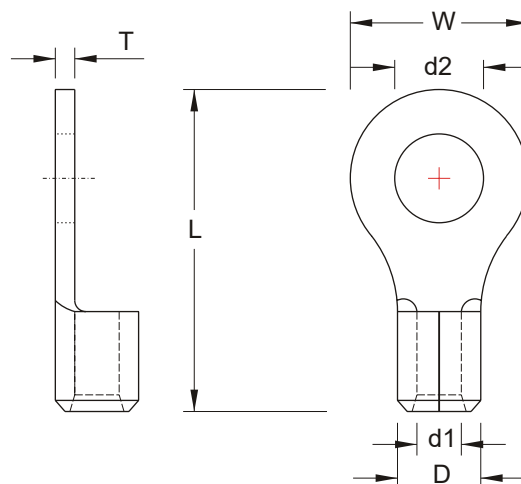


Vật Liệu: Đồng Nguyên Chất 99.9%

Terminal Material: Copper 99.9%

Lớp Mạ Bề Mặt: Thiếc

Plating: Electro Tin Plated



Kích Thước Dây Wire Range mm ²	Mã Hàng Item No.	Lỗ Bắt Vít Stud Size (mm)	Kích thước Dimensions (mm)					
		d2	W	d1	D	L	T	
60 mm ² (42.42~60.57)	RNB60-6	6.4	22.0	11.4	15.4	49.7	1.8	
	RNB60-8	8.4						
	RNB60-10	10.5						
	RNBL60-10	10.5	32.0			57.0		
	RNB60-11	11.5	22.0			49.7		
	RNB60-12	13.0						
	RNBL60-12	13.0	32.0			57.0		
	RNB60-13	10.5	22.0			49.7		
	RNB60-14	15.0	32.0			57.5		
	RNB60-16	17.0						
	RNB60-18	19.0						
	RNB60-20	21.0						
	RNB60-22	23.0						
70 mm ² (60.57~76.28)	RNB70-6	6.4	24.0	13.3	17.5	50.0	2.0	
	RNB70-8	8.4						
	RNB70-10	10.5						
	RNB70-11	11.5						
	RNB70-12	13.0						
	RNB70-13	14.0	32.0			61.0		
	RNB70-14	15.0						
	RNB70-16	17.0						
	RNB70-18	19.0						
	RNB70-20	21.0						
	RNB70-22	23.0						
80 mm ² (76.28~96.3)	RNB80-6	6.4	27.0	14.5	19.5	54.2	2.3	
	RNB80-8	8.4						
	RNB80-10	10.5						
	RNBL80-10	10.5	32.0			68.0		
	RNB80-12	13.0	27.0			54.2		
	RNBL80-12	13.0	32.0			68.0		
	RNB80-14	15.0						
	RNB80-16	17.0						
	RNB80-18	19.0						
	RNB80-20	21.0						
	RNB80-22	23.0						

NON-INSULATED RING TERMINALS

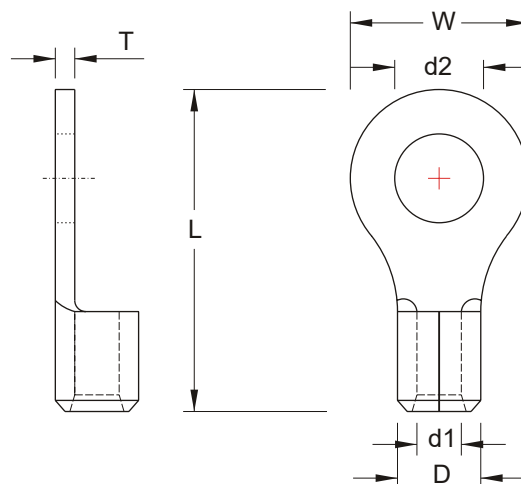


Vật Liệu: Đồng Nguyên Chất 99.9%

Terminal Material: Copper 99.9%

Lớp Mạ Bề Mặt: Thiếc

Plating: Electro Tin Plated



Kích Thước Dây Wire Range mm ²	Mã Hàng Item No.	Lỗ Bắt Vít Stud Size (mm)	Kích thước Dimensions (mm)				
		d2	W	d1	D	L	T
100 mm ² (96.3~117.2)	RNB100-6	6.4	28.5	16.4	22.1	55.6	2.7
	RNB100-8	8.4				69.0	
	RNB60-10	10.5					
	RNB100-10	10.5	32.0			55.6	
	RNBL100-10	10.5	32.0				
	RNB100-11	11.5					
	RNBL100-12	13.0					
	RNB100-14	15.0					
	RNB100-16	17.0					
	RNB100-18	19.0					
	RNB100-20	21.0					
	RNB100-22	23.0					
125 mm ²	RNB125-10	10.5	30.0	22.9	17.5	60.0	2.7
	RNB125-12	13.0					
	RNB125-16	17.0					
150 mm ² (117.2~152.05)	RNB150-8	8.4	36.0	19.5	26.6	66.0	3.2
	RNBL150-8	8.4				81.0	
	RNB150-10	10.5				66.0	
	RNBL150-10	10.5				81.0	
	RNB150-11	11.5				66.0	
	RNB150-12	13.0				81.0	
	RNBL150-12	13.0					
	RNB150-14	15.0				66.0	
	RNBL150-14	15.0				81.0	
	RNB150-16	17.0				66.0	
	RNBL150-16	17.0				81.0	
	RNB150-18	19.0					
	RNB150-20	21.0					
	RNB150-22	23.0					
	RNB150-24	25.0					
	RNB150-27	28.0					

NON-INSULATED RING TERMINALS

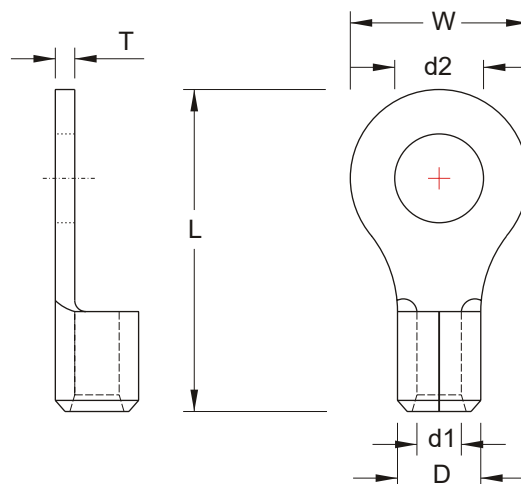


Vật Liệu: Đồng Nguyên Chất 99.9%

Terminal Material: Copper 99.9%

Lớp Mạ Bề Mặt: Thiếc

Plating: Electro Tin Plated



Kích Thước Dây Wire Range mm ²	Mã Hàng Item No.	Lỗ Bắt Vít Stud Size (mm)	Kích thước Dimensions (mm)				
		d2	W	d1	D	L	T
180 mm ² (152.05~192.6)	RNB180-6	6.4	38.5	21.0	28.6	69.0	3.5
	RNB180-8	8.4					
	RNB180-10	10.5					
	RNB180-11	11.5					
	RNB180-12	13.0				86.6	
	RNBL180-12	13.0					
	RNB180-14	15.0				69.0	
	RNB180-16	17.0				86.6	
	RNBL180-16	17.0					
	RNB180-18	19.0					
	RNB180-20	21.0					
	RNB180-22	23.0					
	RNB180-24	25.0					
	RNB180-27	28.0					
200 mm ² (192.6~242.27)	RNB200-8	8.4	44.0	24.0	32.6	72.0	4.0
	RNBL200-8	8.4				90.5	
	RNB200-10	10.5				72.0	
	RNBL200-10	10.5				93.3	
	RNB200-11	11.5				72.0	
	RNB200-12	13.0				90.5	
	RNBL200-12	13.0				72.0	
	RNB200-14	15.0				90.5	
	RNB200-16	17.0				91.0	
	RNBL200-16	17.0					
	RNB200-18	19.0					
	RNB200-20	21.0					
	RNB200-22	23.0					
	RNB200-24	25.0					
	RNB200-27	28.0					

**NON-INSULATED
RING TERMINALS**

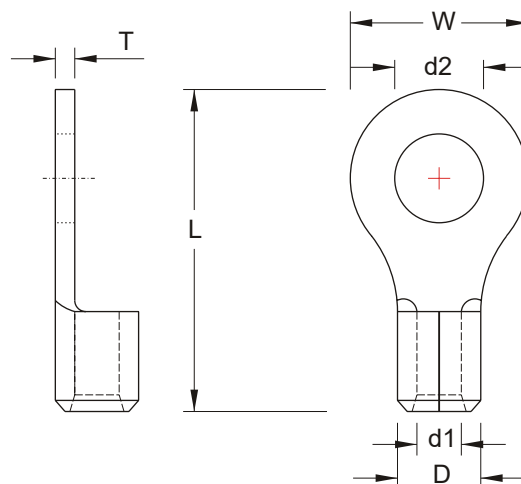


Vật Liệu: Đồng Nguyên Chất 99.9%

Terminal Material: Copper 99.9%

Lớp Mạ Bề Mặt: Thiếc

Plating: Electro Tin Plated



Kích Thước Dây Wire Range mm ²	Mã Hàng Item No.	Lỗ Bắt Vít Stud Size (mm)	Kích thước Dimensions (mm)				
		d2	W	d1	D	L	T
325 mm ² (242.27~325)	RNB325-8	8.4	50.5	28.0	37.6	88.0	4.3
	RNB325-10	10.5				105.5	
	RNBL325-10	10.5				88.0	
	RNB325-11	11.5				105.5	
	RNB325-12	13.0				88.0	
	RNBL325-12	13.0				105.5	
	RNB325-14	15.0				88.0	
	RNB325-16	17.0				105.7	
	RNBL325-16	17.0					
	RNB325-18	19.0					
	RNB325-20	21.0					
	RNB325-22	23.0					
	RNB325-24	25.0					
	RNB325-27	28.0					