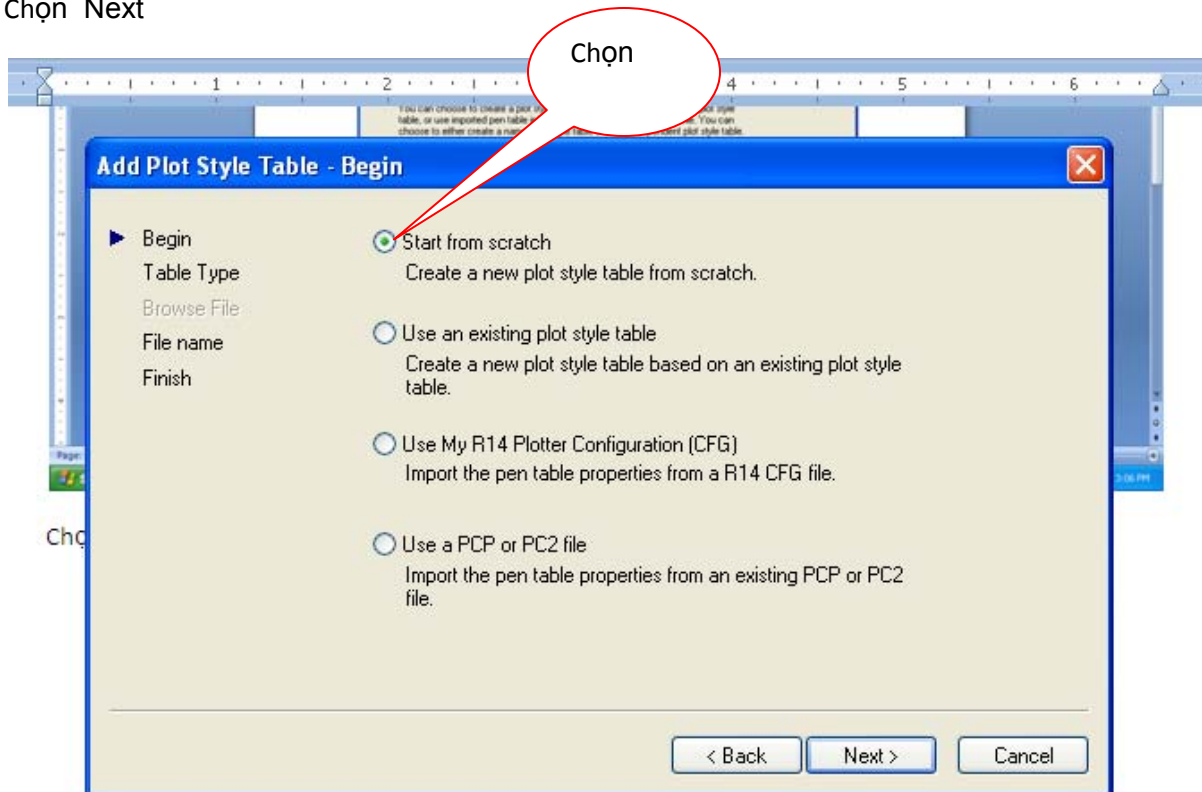
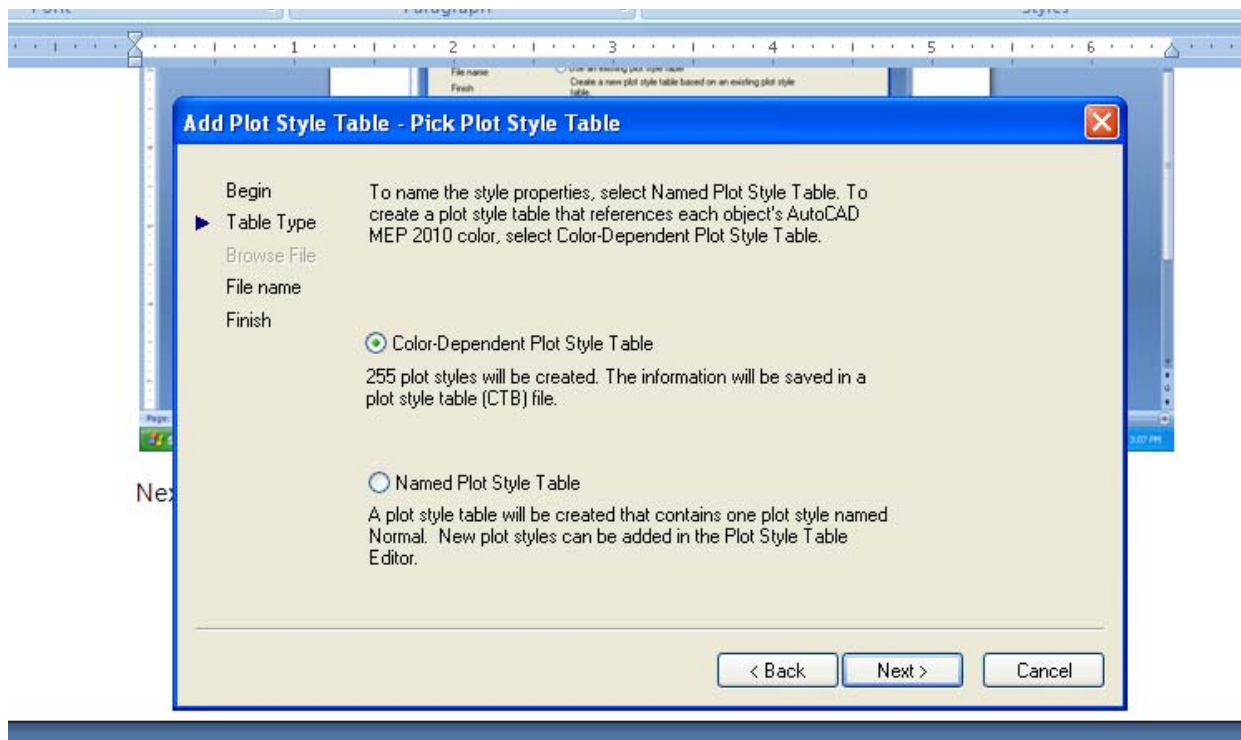


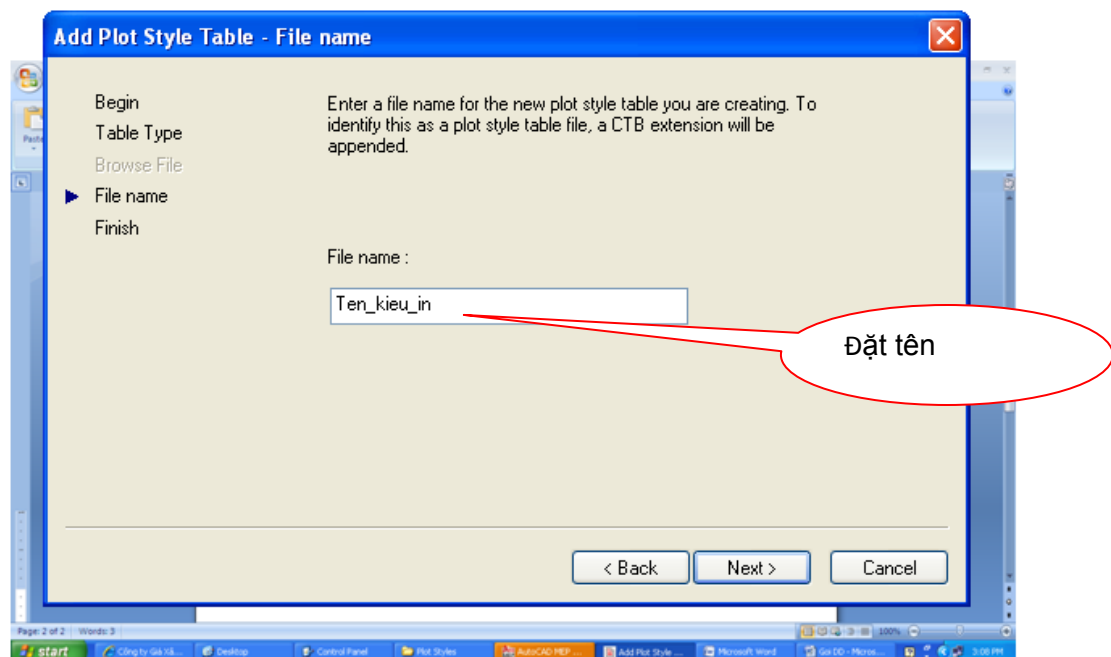
Chọn Next



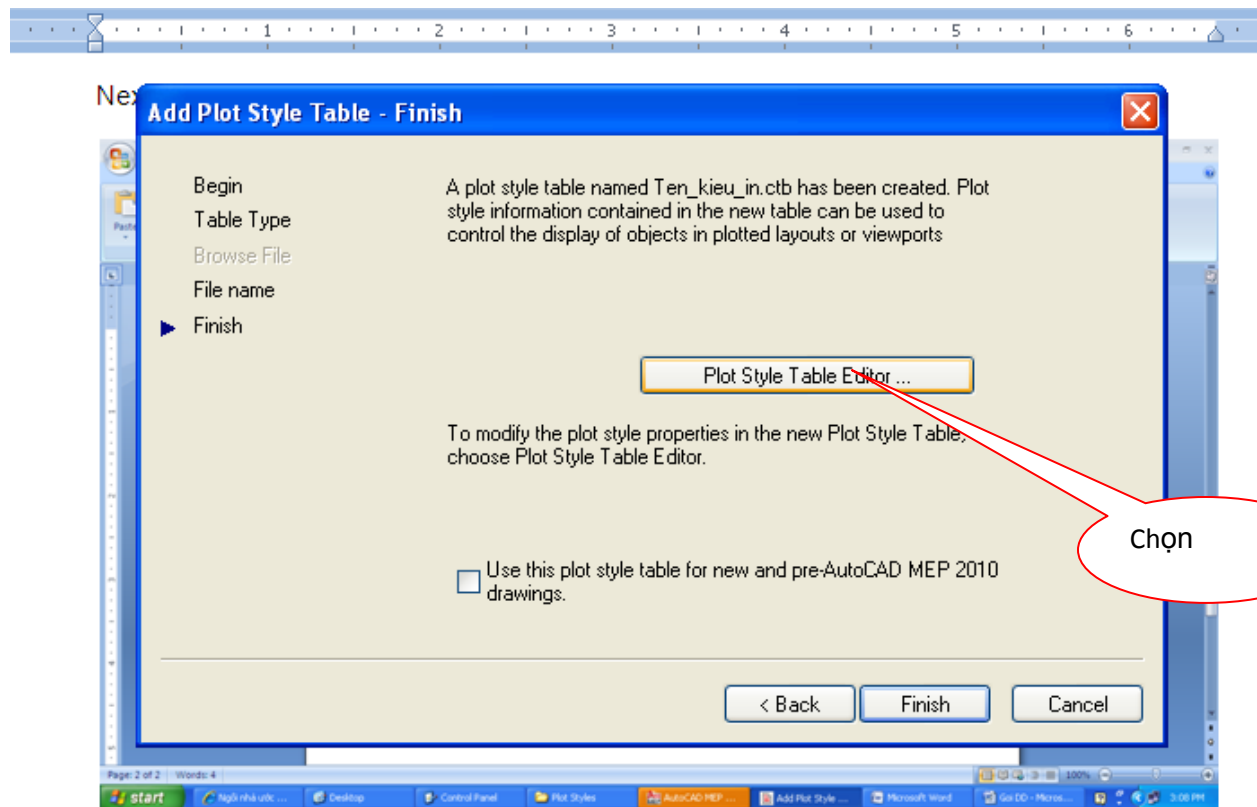
Next



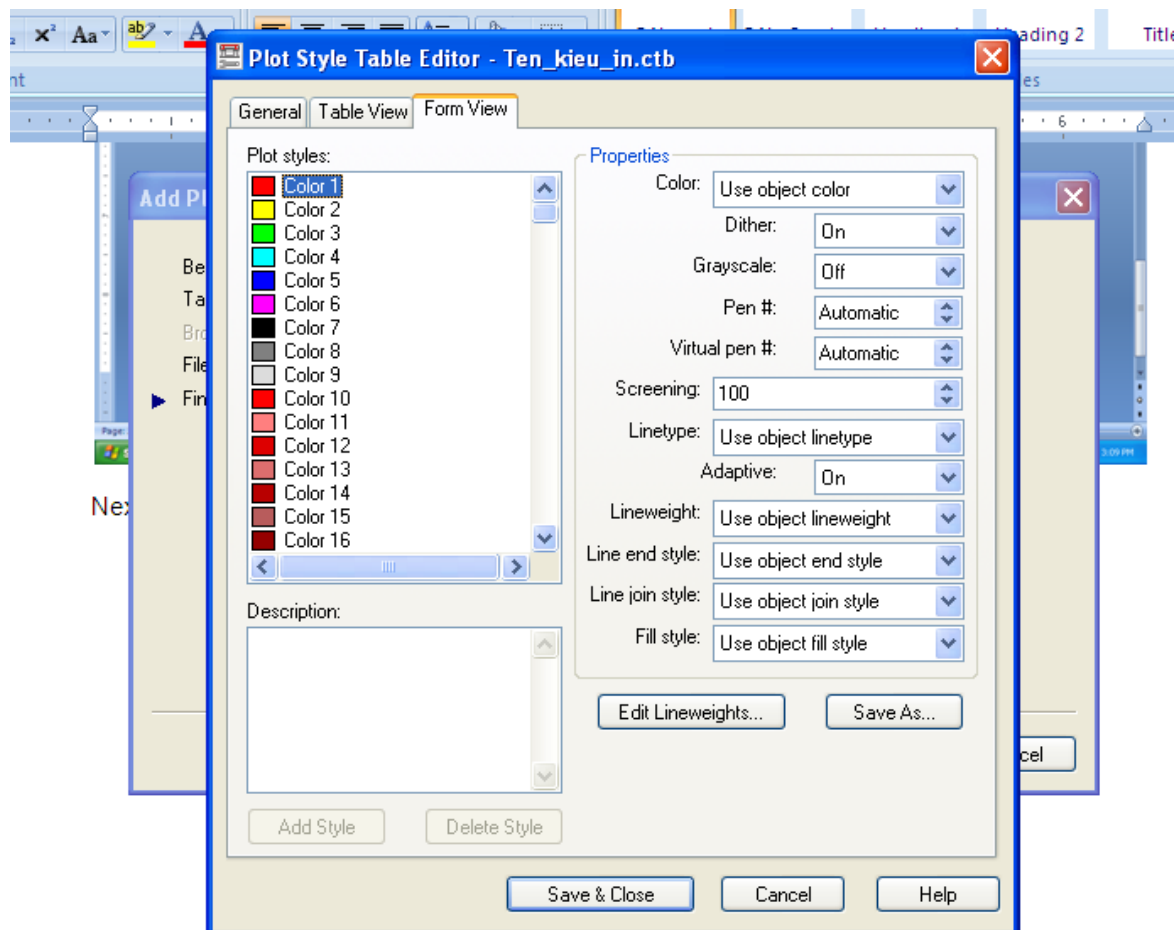
Next



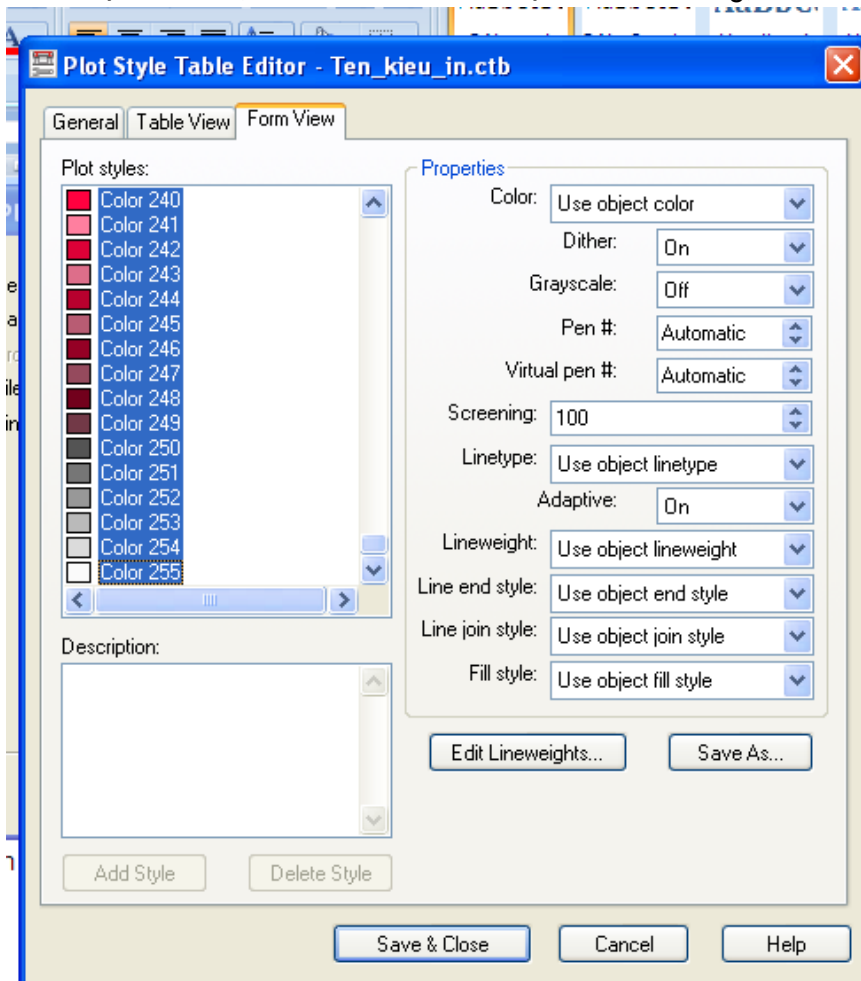
Next



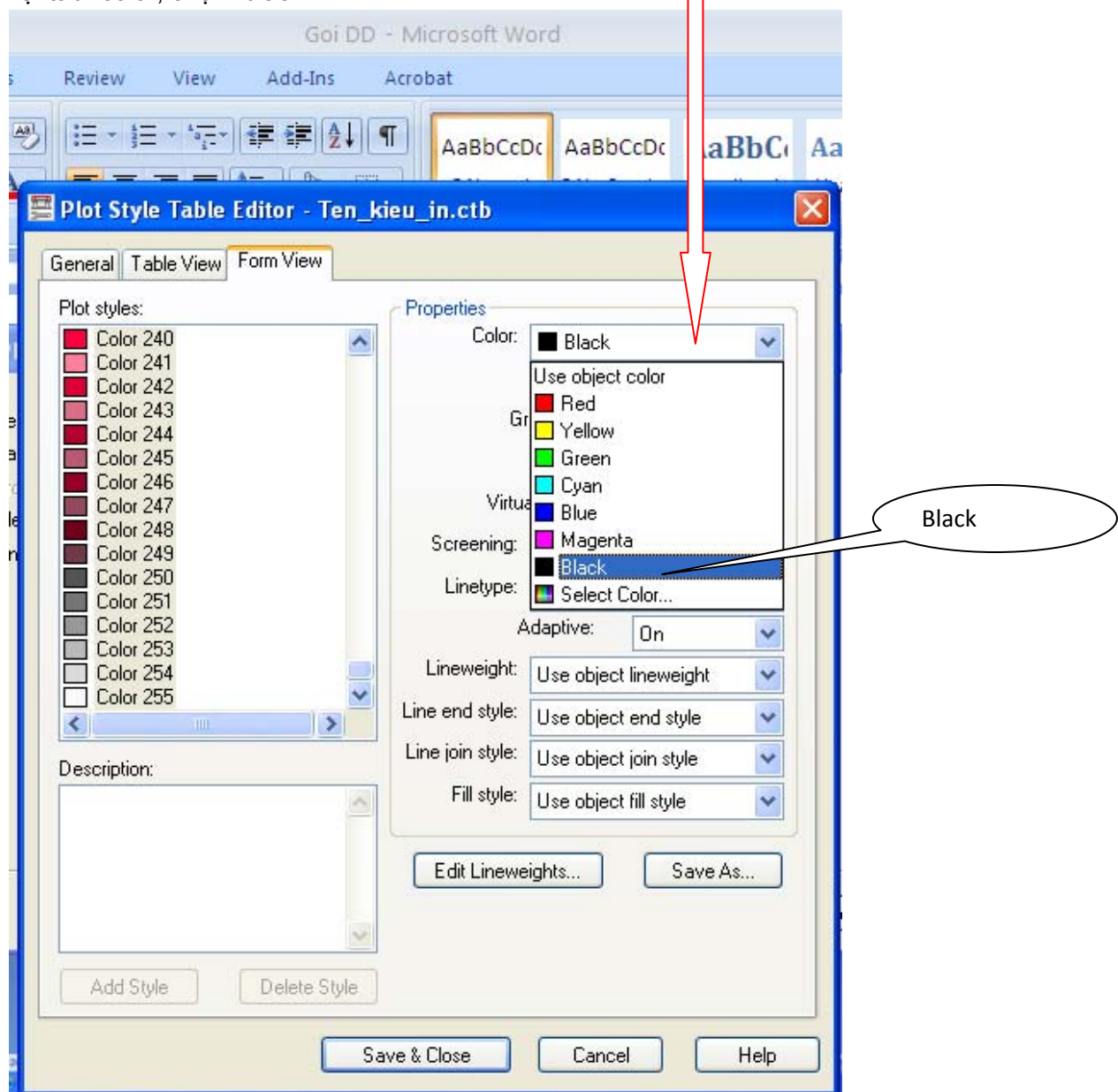
Bấm Plot style table editor



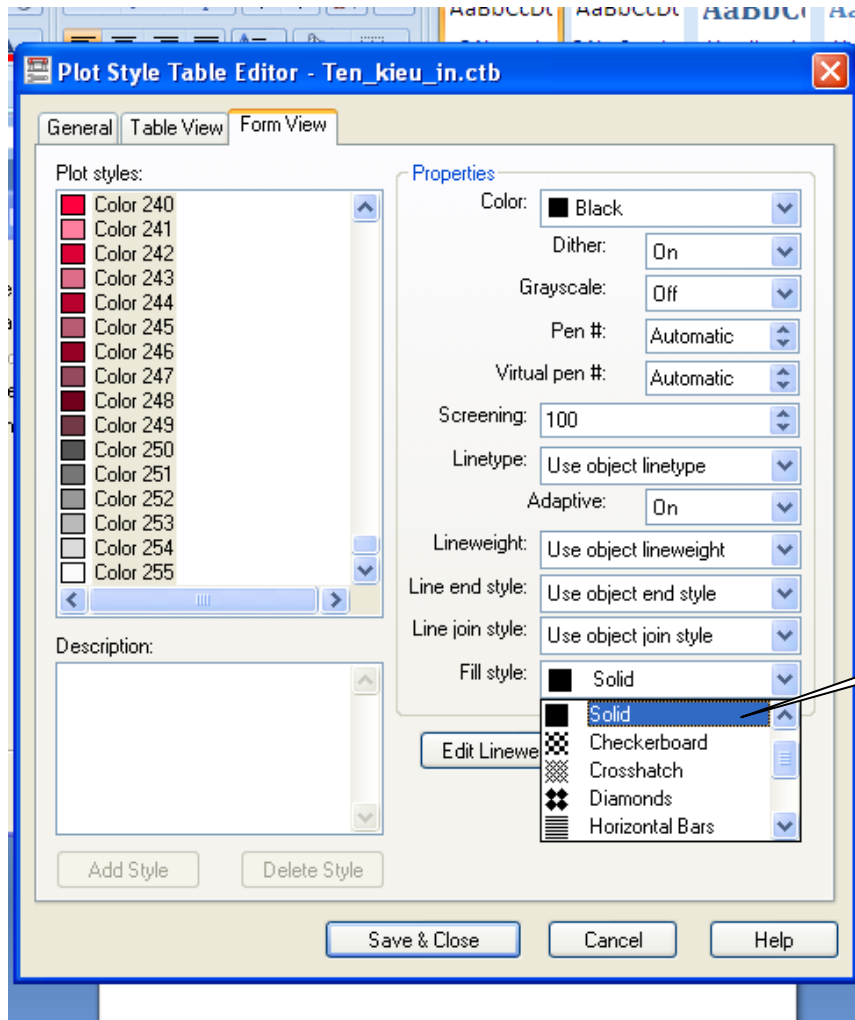
Bấm chọn màu đỏ, sau đó kéo thanh trượt đến cuối cùng, bấm shift chọn màu cuối cùng



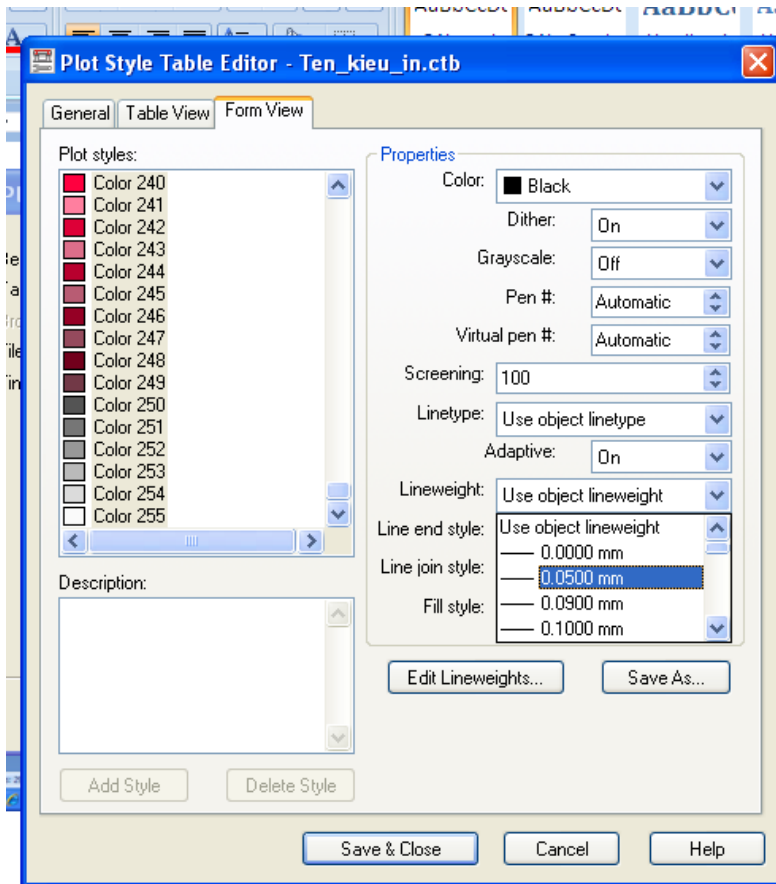
Tại tab “color, chọn “black”



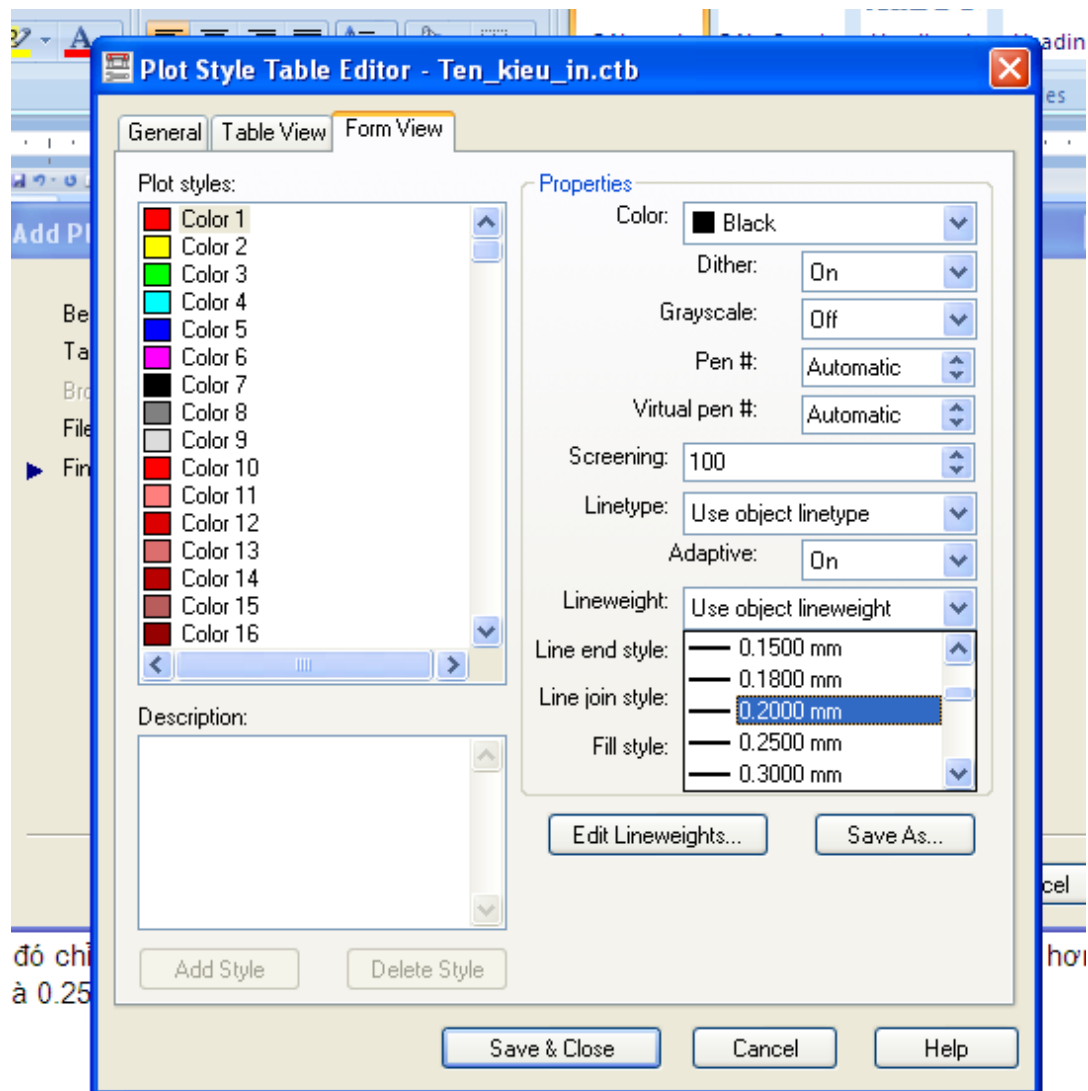
Fill style chọn solid



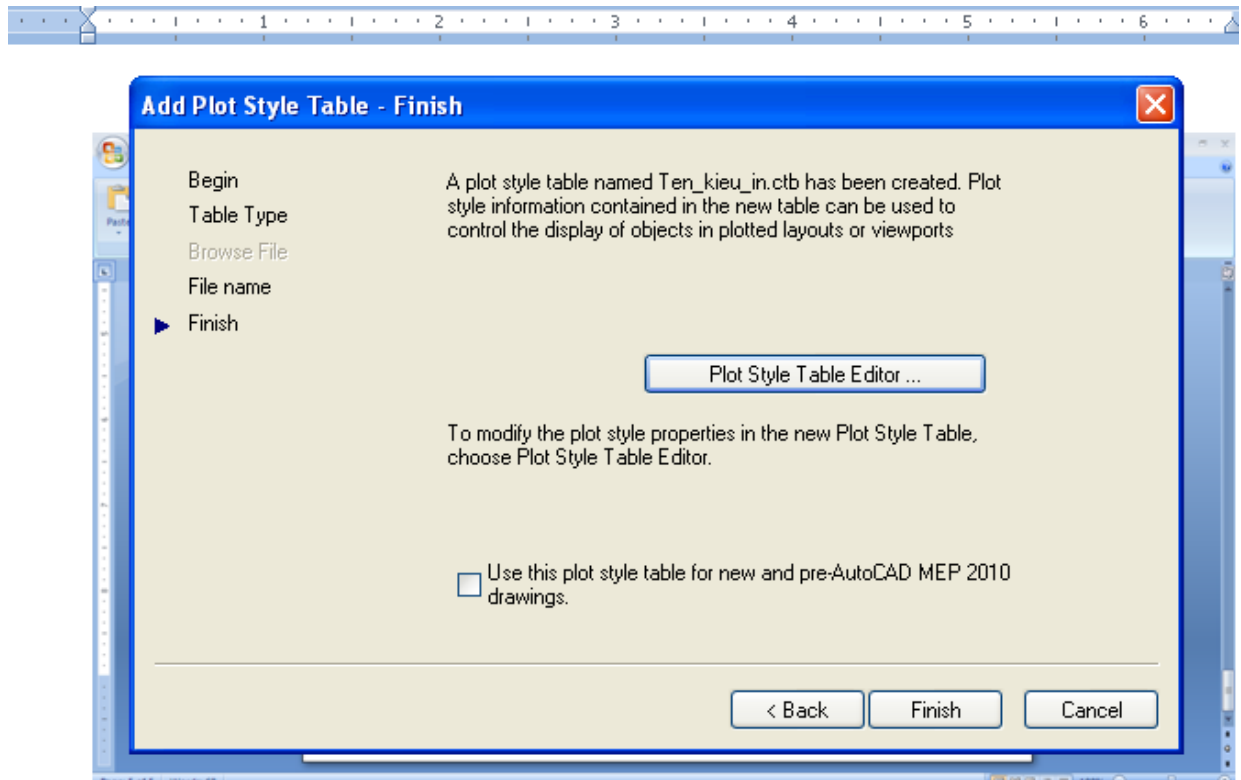
Lineweight chọn 0.05 nếu in A4, 0.05 nếu in A3....



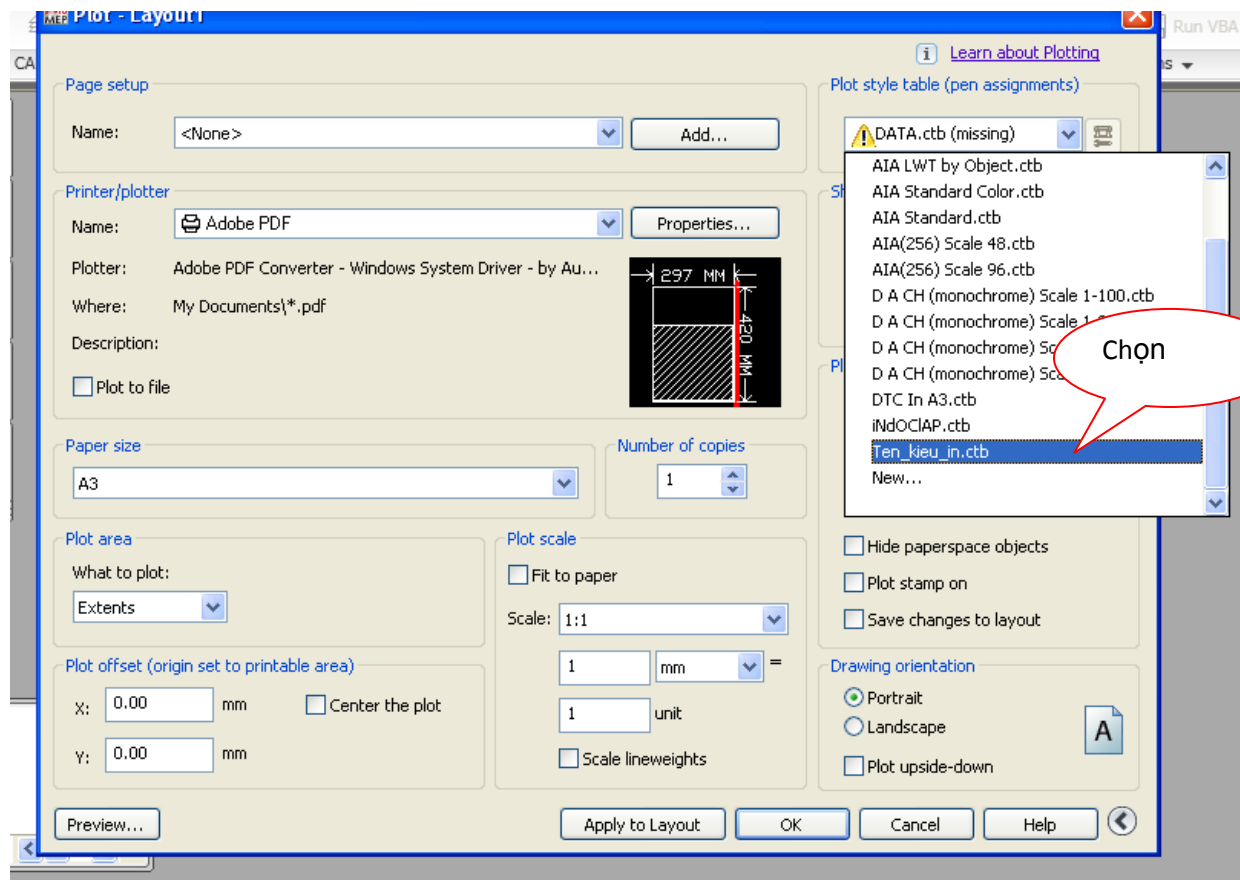
Sau đó chỉ định đường nét in cho các màu chính, chú ý nét lớn nhất cho A4 nên nhỏ hơn 0.2, A3 là 0.25....



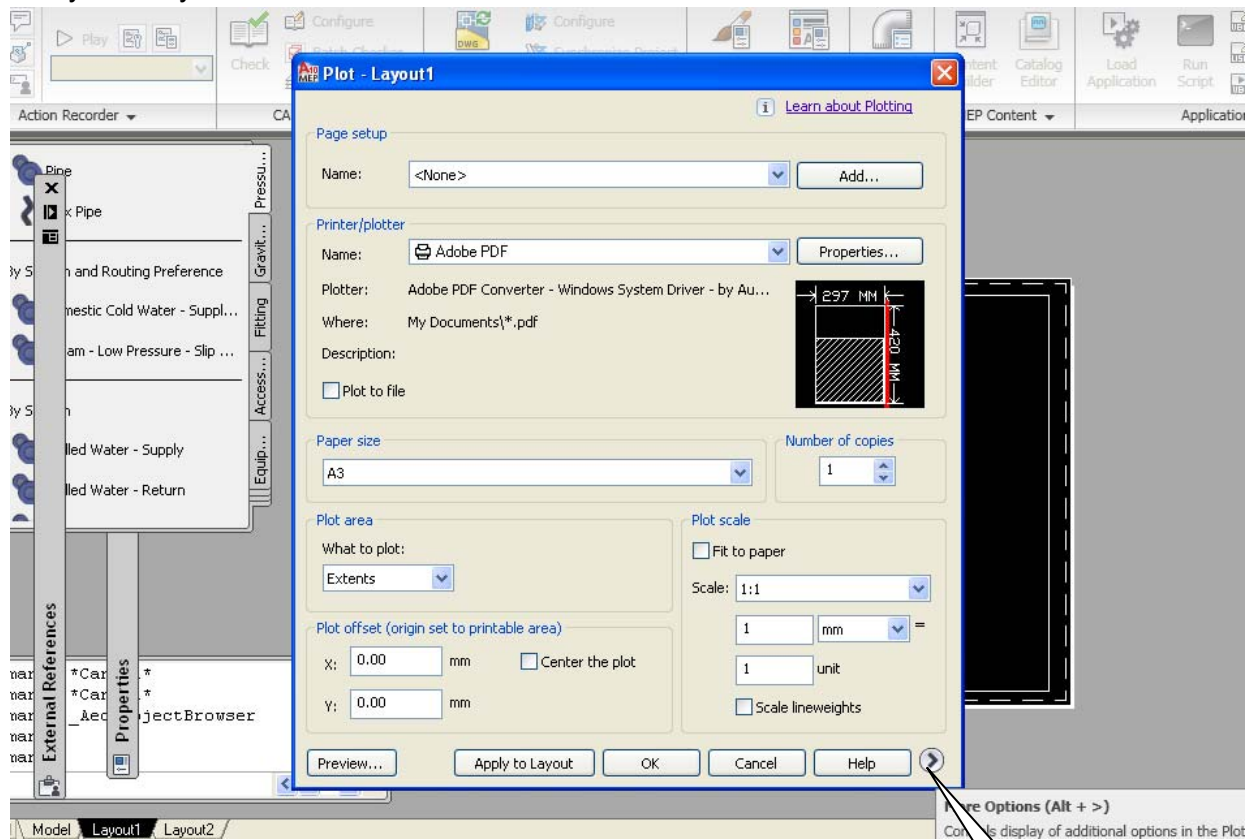
Bấm save& close!



Finish.



Chú ý chỗ này.....



Chúc thành công!

Chú ý